

Smart switches  
for modern  
industrial  
networks.



Gigabit PoE/PoE+ WebAccess/NMS

**B+B SMARTWORX**

Powered by

**ADVANTECH**

**e\worX** | **500**Series

# SE500 Series ► industrial grade managed switches

The SE500 Series of smart switches are designed and built to work in harsh and/or high-bandwidth application environments, and include all the features you want in a managed switch—plus much more. With the addition of innovative, built-in intelligence features it's time to take your network management to the next level.

## 5 reasons you'll want the SE500 series of managed switches

### Stay ahead of the curve with future-proof Gigabit bandwidth

As industrial data needs continue to transform and grow, devices need to keep up. The SE500 Series has the built-in intelligence to transform with your network. The series utilizes compact sizes, the ability to connect multiple network layers and unique port combination options, such as up to 28 ports for Gigabit in 19-inch rack mount and a 20-port Gigabit in DIN-Rail option. The full Gigabit option offers speeds up to 10 times greater than previous generations. SE500 models will last regardless of growing demand for higher bandwidth applications or potential incoming users.

### Intelligent 802.3af/at compliant PoE & PoE+ features

Experience smart PoE management with models that support advanced PoE and PoE+ ports with increased wattage for high-bandwidth applications. PoE ports can support devices up to 30 watts instead of the common 15 watts. High energy-consuming devices, such as wireless access points, outdoor PTZ camera, video surveillance IP cameras and more can be customized and managed without a needed power adaptor. PoE/PoE+ options are 802.3af/at compliant, and models are available with up to 8 and 28 ports.

### Cutting-edge security protections to mitigate data concerns

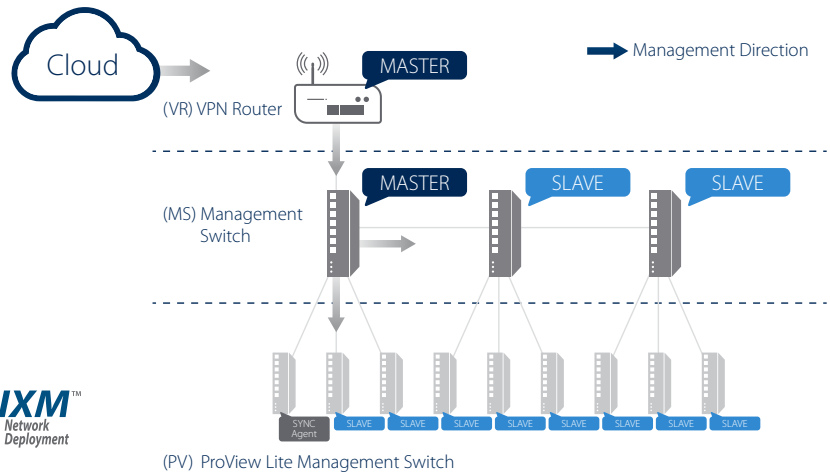
Feel the power and protection of advanced security capabilities, such as secured physical connections, cybersecurity defense, management of packet flowing on the LAN, multiple account management and more. To mitigate data security risks, Account Privilege management settings deny unauthorized users into the network, no matter where they are. Additionally, have confidence in your network's safety with 802.1x authentication processes using port-based authentication.





## Intelligent Provisioning Technology for network deployment

IXM Technology provides user-friendly, built-in intelligence for cross management and deployment functions, which allows administrators to upgrade firmware and deploy and restore configurations more efficiently. IXM offers auto synchronize of firmware updates and push configuration settings for individual or groups of switches via an easy-to-navigate Web GUI. With the Web GUI, users can manage a powerful suite of diagnostic, monitoring and network performance capabilities. There's no wasting time, and no need to train extra personnel.



## Advanced, customizable diagnostic features

Get full access to comprehensive diagnostic tools, such as Digital Diagnostic Monitoring (DDM) for fiber status monitoring and warning, and IPv4/IPv6 Ping Test tool to verify first-line connection conditions. These diagnostic features allow for remote monitoring and prevention of network issues to keep users well-informed to avoid downtime. The DDM monitors fiber status through a system log and aids in identifying required service levels. Diagnostic features also allow for customization of status messages and warnings—monitor performance points important to you and your application.

## Designed and built for harsh environments

- Certifications for NEMA TS2 in Traffic Management, UL508 in Control Panel and EN50121-4 in Wayside Traffic Control
- Wide temperature range, -40 to 75°C
- Radiated/conducted noise protection, EMC Level 3
- Overload current protection and power-fail relay
- MTBF: 858,835 hours

## Cost-effective solutions, reduced TCO

- IEEE802.3az energy-efficient Ethernet cuts power usage
- B+B's IXM minimizes deployment and firmware configuration time
- No need to pay a software license fee for B+B's IXM intelligent provisioning
- Avoid costly expansions with future-proof Gigabit
- Avoid downtime and easily troubleshoot issues with DDM SFP, IPv4/IPv6 Ping Test tool, cable diagnostics and more

## L2 advanced management suite

Managed switches give you better control over LAN traffic and offer additional advanced features to control traffic and data with segmentation, troubleshooting, security access and more. The five previously discussed key features help round out the full advanced management suite for the SE500 Series.

- Network management/troubleshooting
- Network security access
- Network redundancy and resilience
- Network segmentation with multiple groups
- Network traffic optimization and prioritization



B+B SmartWorx guarantees that all eWorx switches—managed, monitored or unmanaged—are free from defects in material and workmanship for its lifetime.



### Ethernet Green®. IEEE802.3az Energy-Efficient Ethernet

- eWorx Switches cut power usage by up to 60%, reducing total cost of ownership
- Automatically powers down ports that have no link
- Budgets power output for different Ethernet cable lengths





