

Ethernet (10Base-T, 10Base-2) to Serial Converter **CE** Model SS1

Description

The Serial Server (SS1) is designed to make it easy to connect a serial port device to your network without a local host. A remote PC or terminal can then be used to monitor, configure, manage, and send or receive data to the serial port device through the LAN via telnet. This module can also connect any two asynchronous serial devices through the LAN and between LAN's via routers when used in client-server mode (requires two modules). Connections will automatically be opened when the units power up when in the client-server mode, eliminating the need for manual requests. A new feature called EtherModem mode allows a serial device to treat the SS1 as if it was a true "Ethernet Modem", using normal modem control and response strings such as "ATD", "ATE", +++, etc. This allows a single SS1 to connect to multiple remote servers (either SS1's or telnet servers) under control of the attached serial device. Common applications include remote data collection terminals, bar code scanners, building automation equipment, UPS's, climate control devices, and multiplexers. For easy connection to your LAN, model SS1 supports both BNC (10Base-2) and RJ45 (10Base-T) connections. The module will automatically adjust for each type of network connection. Power supply is included.

Features

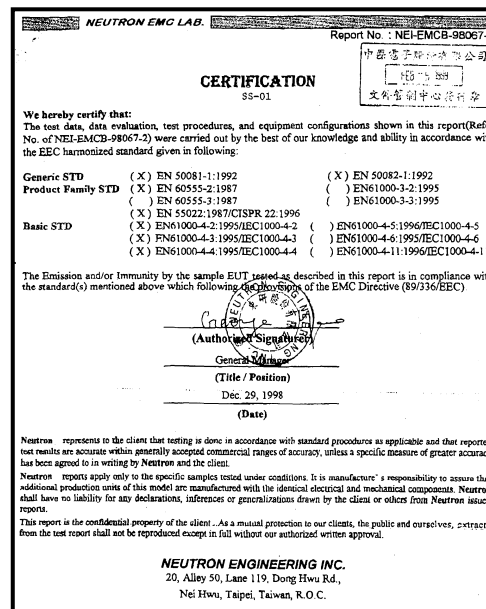
- New! **EtherModem®** technology!
- Configuration via Web Browser, Telnet, or direct connection
- SNMP agent functionality
- Reverse Telnet, Telnet Client or Server capability
- Supports the popular TCP/IP protocol
- Composite RS-232 rate to 230K baud
- Single Serial Port server
- Telnet server provides remote workstation serial ports
- Use to access remote serial devices via LAN
- Use on the LAN or via Routers
- Ideal for Internet or Intranet
- Economical asynchronous "Ethernet modem"



RS-232 Connector

The serial port of the SS1 module uses a male DB-9 connector. Pin outs of the DB-9 are shown below in the table.

DB-9M Pin Number	RS-232 Mode	Type
1	DCD	In
2	RD	In
3	TD	Out
4	DTR	Out
5	GND	---
6	DSR	In
7	RTS	Out
8	CTS	In
9	RI	In



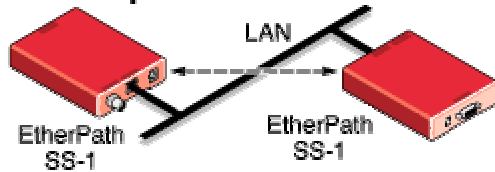
B&B Electronics – Revised November 2000

B & B Electronics Mfg. Co.
707 Dayton Road - P.O. Box 1040 - Ottawa, IL 61350 USA
Phone: (815) 433-5100 - Fax: (815) 433-5105
Home Page: www.bb-elec.com
Sales e-mail: orders@bb-elec.com - Fax: (815) 433-5109
Technical Support e-mail: support@bb-elec.com - Fax: (815) 433-5104

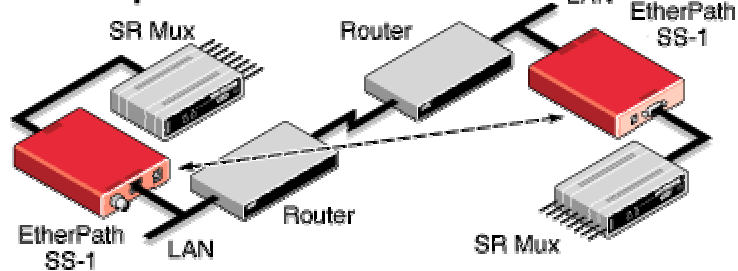
B & B Electronics Ltd
Westlink Commercial Park - Oranmore, Co. Galway - Ireland
Phone: +353 91 792444 - Fax: +353 91 792445
Home Page: www.bb-europe.com
Sales e-mail: orders@bb-europe.com
Technical Support e-mail: support@bb-europe.com

Applications

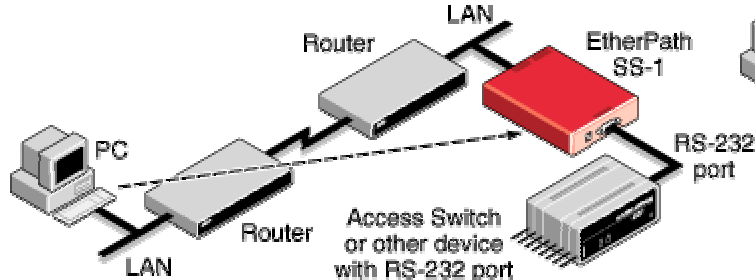
“Nailed up” Serial Link to same LAN



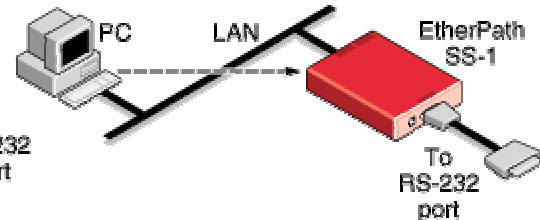
“Nailed up” Serial Link to remote LAN



Telnet to a remote LAN Serial Port



Telnet to a Serial Port on same LAN



Specification Summary

Protocols:	TCP/IP, UDP, ARP, ICMP, TELNET
OS:	All versions of Windows Unix – SCO, Sun, AIX, Linux Macintosh (Requires a Telnet program that is able to address different port values e.g. port 3000, port 8000)
Indicators:	Link and Error LED's
Controls:	Two dip switches used to establish operating mode
Mode Supported:	Nailed-UP Client/Server (transparent RS-232 connection) Telnet Server (any port) Telnet Client (any port), Reverse Telnet EtherModem (point-to-multipoint)
RS-232 Mode:	Supports TD, RD, RTS, CTS, DTR, DSR, DCD, & RI
Baud Rate:	300 to 230K baud
Connector:	DB9 male (DTE configuration)
Flash Memory:	512KB
SRAM:	512KB
NVRAM:	512B
Network:	Ethernet 10Base-2 (thin BNC connector) & 10Base-T (twisted pair RJ45 connector)
CPU:	Intel 186-25
RS-232 Buffer:	4KB
LAN Buffer:	16KB
Dimensions:	3.5 x 4.8 x 1.3 inches (8.9 x 12.1 x 3.2 cm)
Power:	500 mA @ 9 VDC output with 120 VAC @ 60 Hz input external power supply (US) 500 mA @ 9 VDC output with 250 VAC @ 50 Hz input external power supply (European)
Power Consumption:	15 W maximum

B&B Electronics – Revised November 2000

B & B Electronics Mfg. Co.

707 Dayton Road - P.O. Box 1040 - Ottawa, IL 61350 USA
 Phone: (815) 433-5100 - Fax: (815) 433-5105
 Home Page: www.bb-elec.com
 Sales e-mail: orders@bb-elec.com - Fax: (815) 433-5109
 Technical Support e-mail: support@bb-elec.com - Fax: (815) 433-5104

B & B Electronics Ltd

Westlink Commercial Park - Oranmore, Co. Galway - Ireland
 Phone: +353 91 792444 - Fax: +353 91 792445
 Home Page: www.bb-europe.com
 Sales e-mail: orders@bb-europe.com
 Technical Support e-mail: support@bb-europe.com