

Wireless-B Access Point



Use this guide to install: WAP11

User Guide

LINKSYS[®]

COPYRIGHT & TRADEMARKS

Specifications are subject to change without notice. Linksys is a registered trademark or trademark of Cisco Systems, Inc. and/or its affiliates in the U.S. and certain other countries. Copyright © 2003 Cisco Systems, Inc. All rights reserved. Other brands and product names are trademarks or registered trademarks of their respective holders.

LIMITED WARRANTY

Linksys warrants to the original end user purchaser ("You") that, for a period of one year, (the "Warranty Period") Your Linksys product will be free of defects in materials and workmanship under normal use. Your exclusive remedy and Linksys's entire liability under this warranty will be for Linksys at its option to repair or replace the product or refund Your purchase price less any rebates.

If the product proves defective during the Warranty Period call Linksys Technical Support in order to obtain a Return Authorization Number. BE SURE TO HAVE YOUR PROOF OF PURCHASE ON HAND WHEN CALLING. When returning a product, mark the Return Authorization Number clearly on the outside of the package and include a copy of your original proof of purchase. RETURN REQUESTS CANNOT BE PROCESSED WITHOUT PROOF OF PURCHASE. You are responsible for shipping defective products to Linksys. Linksys pays for UPS Ground shipping from Linksys back to You only. Customers located outside of the United States of America and Canada are responsible for all shipping and handling charges.

ALL IMPLIED WARRANTIES AND CONDITIONS OF MERCHANTABILITY OR FITNESS FOR A PARTICULAR PURPOSE ARE LIMITED TO THE DURATION OF THE WARRANTY PERIOD. ALL OTHER EXPRESS OR IMPLIED CONDITIONS, REPRESENTATIONS AND WARRANTIES, INCLUDING ANY IMPLIED WARRANTY OF NON-INFRINGEMENT, ARE DISCLAIMED. Some jurisdictions do not allow limitations on how long an implied warranty lasts, so the above limitation may not apply to You. This warranty gives You specific legal rights, and You may also have other rights which vary by jurisdiction.

TO THE EXTENT NOT PROHIBITED BY LAW, IN NO EVENT WILL LINKSYS BE LIABLE FOR ANY LOST DATA, REVENUE OR PROFIT, OR FOR SPECIAL, INDIRECT, CONSEQUENTIAL, INCIDENTAL OR PUNITIVE DAMAGES, HOWEVER CAUSED REGARDLESS OF THE THEORY OF LIABILITY, ARISING OUT OF OR RELATED TO THE USE OF OR INABILITY TO USE THE PRODUCT, EVEN IF LINKSYS HAS BEEN ADVISED OF THE POSSIBILITY OF SUCH DAMAGES. IN NO EVENT WILL LINKSYS' LIABILITY EXCEED THE AMOUNT PAID BY YOU FOR THE PRODUCT.

The foregoing limitations will apply even if any warranty or remedy provided under this Section fails of its essential purpose. Some jurisdictions do not allow the exclusion or limitation of incidental or consequential damages, so the above limitation or exclusion may not apply to You.

Please direct all inquiries to: Linksys, P.O. Box 18558, Irvine, CA 92623.

FCC STATEMENT

This product has been tested and complies with the specifications for a Class B digital device, pursuant to Part 15 of the FCC Rules. These limits are designed to provide reasonable protection against harmful interference in a residential installation. This equipment generates, uses, and can radiate radio frequency energy and, if not installed and used according to the instructions, may cause harmful interference to radio communications. However, there is no guarantee that interference will not occur in a particular installation. If this equipment does cause harmful interference to radio or television reception, which is found by turning the equipment off and on, the user is encouraged to try to correct the interference by one or more of the following measures:

- Reorient or relocate the receiving antenna
- Increase the separation between the equipment or devices
- Connect the equipment to an outlet other than the receiver's
- Consult a dealer or an experienced radio/TV technician for assistance

FCC Radiation Exposure Statement

This equipment complies with FCC radiation exposure limits set forth for an uncontrolled environment. This equipment should be installed and operated with minimum distance 20cm between the radiator and your body.

INDUSTRY CANADA (CANADA)

This Class B digital apparatus complies with Canadian ICES-003.

Cet appareil numérique de la classe B est conforme à la norme NMB-003 du Canada. The use of this device in a system operating either partially or completely outdoors may require the user to obtain a license for the system according to the Canadian regulations.

EC DECLARATION OF CONFORMITY (EUROPE)

Linksys Group declares that the Wireless-B Access Point conforms to the specifications listed below, following the provisions of the European R&TTE directive 1999/5/EC:

For 11Mbps, 2.4 GHz devices with 100 mW radios, the following standards were applied:

- EN 301 489-1, 301 489-17 General EMC requirements for Radio equipment.
- EN 609 50 Safety
- ETS 300-328-2 Technical requirements for Radio equipment.

Caution: This equipment is intended to be used in all EU and EFTA countries. Outdoor use may be restricted to certain frequencies and/or may require a license for operation. Contact local Authority for procedure to follow.

Note: Combinations of power levels and antennas resulting in a radiated power level of above 100 mW equivalent isotropic radiated power (EIRP) are considered as not compliant with the above mentioned directive and are not allowed for use within the European community and countries that have adopted the European R&TTE directive 1999/5/EC.

For more details on legal combinations of power levels and antennas, contact Linksys Corporate Compliance.

- Linksys Group vakuuttaa täten että Wireless-B Access Point tyyppinen laite on direktiivin 1999/5/EY oleellisten vaatimusten ja sitä koskevien näiden direktiivien muiden ehtojen mukainen.
- Linksys Group déclare que la Wireless-B Access Point est conforme aux conditions essentielles et aux dispositions relatives à la directive 1999/5/EC.

Table of Contents

- Dans le cas d'une utilisation privée, à l'extérieur d'un bâtiment, au-dessus d'un espace public, aucun enregistrement n'est nécessaire pour une distance de moins de 300m. Pour une distance supérieure à 300m un enregistrement auprès de l'IBPT est requise. Pour une utilisation publique à l'extérieur de bâtiments, une licence de l'IBPT est requise. Pour les enregistrements et licences, veuillez contacter l'IBPT.
- France F:
2.4 GHz Bande : les canaux 10, 11, 12, 13 (2457, 2462, 2467, et 2472 MHz respectivement) sont complètement libres d'utilisation en France (en utilisation intérieur). Pour ce qui est des autres canaux, ils peuvent être soumis à autorisation selon le département. L'utilisation en extérieur est soumise à autorisation préalable et très restreint.
Vous pouvez contacter l'Autorité de Régulation des Télécommunications (<http://www.art-telecom.fr>) pour de plus amples renseignements.

2.4 GHz Band: only channels 10, 11, 12, 13 (2457, 2462, 2467, and 2472 MHz respectively) may be used freely in France for indoor use. License required for outdoor installations.
Please contact ART (<http://www.art-telecom.fr>) for procedure to follow.

Chapter 1: Introduction	1
The Wireless-B Access Point	1
Features	1
Chapter 2: Planning Your Wireless Network	2
Network Topology	2
Ad-Hoc versus Infrastructure Mode	2
Chapter 3: Getting to Know the Wireless-B Access Point	4
The Wireless-B Access Point's Ports	4
The Wireless-B Access Point's LEDs	5
Chapter 4: Connecting the Wireless-B Access Point	6
Chapter 5: Setting Up the Wireless-B Access Point	7
Chapter 6: Configuring the Wireless-B Access Point	15
The Setup Tab	15
The Password Tab	22
The Status Tab	23
The Log Tab	25
The Help Tab	26
The Filter Tab	27
The Wireless Tab	29
Appendix A: Troubleshooting	32
Common Problems and Solutions	32
Frequently Asked Questions	32
Appendix B: Setting Up the TCP/IP Protocol	36
Setting Up TCP/IP in Windows	36
TCP/IP Setup for Windows 98 and Millennium	37
TCP/IP Setup for Windows 2000	38
TCP/IP Setup for Windows XP	39

Appendix C: Glossary	40
Appendix D: Specifications	48
Environmental	48
Appendix E: Warranty Information	49
Appendix F: Contact Information	50

Chapter 1: Introduction

The Wireless-B Access Point

Set your network free! The Wireless Access Point from Linksys connects wireless computers to your wired network, so you can add PCs to the network with no cabling hassle. Create a “wireless bubble” in that hard-to-wire office space, and save the time, hassle, and expense of running cables. Plus, notebook PCs can travel around your home or office and stay connected wherever they go.

You can also use the Wireless Access Point as a kind of “cable-less cable” to connect remote areas together. Maybe Shipping is all the way across the warehouse from Receiving. Or maybe you want to set up a home office in your detached garage. With a Wireless Access Point in the garage, and another one (or the Linksys Wireless Ethernet Bridge) in the house, you’re connected—with no cable to run.

For even more versatility, the Wireless Access Point can act as a Repeater. If you’re already using one WAP11, you can extend your wireless network’s range by installing a second one that “bounces” received data further down the line. The repeating Access Point can be installed nearly anywhere, because it works entirely by radio—no data cable is necessary.

Whichever mode you use, the dual antenna configuration provides “antenna diversity”, for exceptional signal sensitivity and increased usable range. To protect your data and privacy the Wireless Access Point can encrypt all wireless transmissions. The MAC Address filter lets you decide exactly who has access to your wireless network. Configuration is a snap with web browser-based configuration.

The Linksys Wireless Access Point is the simple, versatile way to add wireless capabilities to your network.

Features

- High-Speed Data Transfer Rates of up to 11Mbps
- Compatible with IEEE 802.11b, 2.4GHz Compliant Equipment
- Supports Wireless Bridging, Wireless Repeater, MAC Address Filtering, and Event Logging
- Setup Wizard for Easy Installation
- Built-in Web-based Utility for Easy Configuration from any Web Browser
- Wireless Security with Up to 128-bit WEP Encryption

Chapter 2: Planning Your Wireless Network

Network Topology

A wireless local area network (WLAN) is exactly like a regular local area network (LAN), except that each computer in the WLAN uses a wireless device to connect to the network. Computers in a WLAN share the same frequency channel and SSID, which is an identification name for wireless devices.

Ad-Hoc versus Infrastructure Mode

Unlike wired networks, wireless networks have two different modes in which they may be set up: **infrastructure** and **ad-hoc**. An infrastructure configuration is a WLAN and wired LAN communicating to each other through an access point. An ad-hoc configuration is wireless-equipped computers communicating directly with each other. Choosing between these two modes depends on whether or not the wireless network needs to share data or peripherals with a wired network or not.

If the computers on the wireless network need to be accessed by a wired network or need to share a peripheral, such as a printer, with the wired network computers, the wireless network should be set up in **infrastructure** mode. (See Figure 2-1.) The basis of infrastructure mode centers around an *access point*, which serves as the main point of communications in a wireless network.

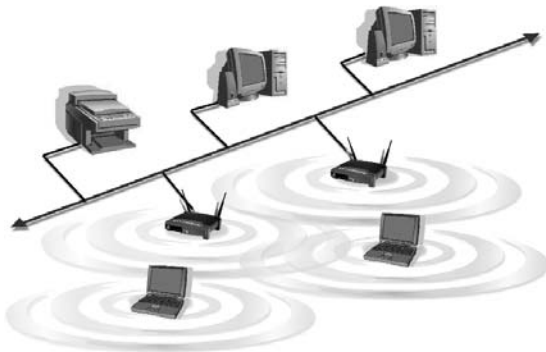


Figure 2-1

Access points transmit data to PCs equipped with wireless network cards, which can *roam* within a certain radial range of the access point. Multiple access points can be arranged in succession to extend the roaming range, and can be set up to communicate with your Ethernet (wired) hardware as well.

If the wireless network is relatively small and needs to share resources only with the other computers on the wireless network, then the **ad-hoc** mode can be used. (See Figure 2-2.) Ad-hoc mode allows computers equipped with wireless transmitters and receivers to communicate directly with each other, eliminating the need for an access point. The drawback of this mode is that, in Ad-Hoc mode, wireless-equipped computers are not able to communicate with computers on a wired network. And, of course, communication between the wireless-equipped computers is limited by the distance and interference directly between them.



Figure 2-2

Chapter 3: Getting to Know the Wireless-B Access Point

The Wireless-B Access Point's Ports

The Access Point's ports and Reset button are located on the Access Point's rear panel.



Figure 3-1

Reset Button

There are two ways to reset the Access Point's factory defaults. Briefly press the Reset Button for approximately ten seconds, or use the *Password* tab of the Access Point's Web-based Utility.



Important: Resetting the Access Point will erase all of your settings (WEP Encryption, Wireless, and LAN settings, etc.) and replace them with the factory defaults.

LAN

This LAN (Local Area Network) port connects to Ethernet network devices, such as a hub, switch, or router.

Power

The Power port is where you will connect the power adapter.

The Wireless-B Access Point's LEDs



Figure 3-2

Power

Red. The **Power** LED lights up when the Access Point is powered on.

Act

Green. If the **Act** LED is flickering, the Access Point is actively sending or receiving data to or from one of the devices on the wireless network.

Link

Orange. The **Link** LED serves two purposes. If the LED is continuously lit up, the Access Point is successfully connected to a device through the LAN port. If the LED is flickering, it is an indication of any wired network activity.

Chapter 4: Connecting the Wireless-B Access Point

1. Locate an optimum location for the Access Point. The best place for the Access Point is usually at the center of your wireless network, with line of sight to all of your wireless devices.
2. Fix the direction of the antennas. Try to place it in a position which can best cover your wireless network. Normally, the higher you place the antennas, the better the performance will be. Their positioning enhances the receiving sensitivity. Both antennas should be perpendicular to the ground and parallel to each other.

3. Connect the included Category 5 Ethernet network cable to the Access Point. Then, connect the other end of the Ethernet cable to a switch or hub. The Access Point will then be connected to your wired network.



Figure 4-1

4. Connect the AC power adapter to the Access Point's Power port. Only use the power adapter supplied with the Access Point. Use of a different adapter may result in product damage.



Figure 4-2



Note: In order for all other wireless devices to communicate with the Access Point, those devices must be operating in the infrastructure mode. If any wireless devices are configured in the ad-hoc mode, they *will not* be recognized by the Access Point.

Proceed to “Chapter 5: Setting Up the Wireless-B Access Point” for directions on how to set up the Access Point.

Chapter 5: Setting Up the Wireless-B Access Point



Have You: Connected the Access Point to a hub, switch, or router on your wired network as shown in “Chapter 4: Connecting the Wireless-B Access Point”?

Now that you’ve connected the Access Point to your wired network, you are ready to begin setting it up. The Setup Wizard will take you through all the steps necessary to configure the Access Point, so your wireless and wired networks will be able to communicate and share resources.



Note: While the Access Point has been designed to work correctly right out of the box, setting it up on a wireless computer will require you to use the Linksys default settings. These settings can then be changed through the Web-based Utility.

1. Insert the Setup Wizard CD into your PC’s CD-ROM drive. Optimally, your PC should be on your wired network.
2. The screen in Figure 5-1 should appear on your monitor. If it does not, this means the autorun is not functioning. Start the autorun manually by clicking the **Start** button, selecting **Run**, and typing **D:\setup.exe** (if “D” is your PC’s CD-ROM drive). Click the **Setup** button to run the Setup Wizard. Clicking the **User Guide** button opened this User Guide. To access the Linksys website on an active Internet connection, click the **LINKSYS WEB** button, or to exit this Setup Wizard, click the **Exit** button.



Figure 5-1

3. You can configure the Access Point through any PC connected to your wired network. Make sure the Access Point is connected to one of your network switches or hubs. Click the **Next** button to continue or **Exit** to exit the Setup Wizard.



Figure 5-2

4. The next screen to appear, shown in Figure 5-3, will display a list of access points on your network, along with the status information for each access point. If there is only one access point on your network, it will be the only one displayed. If there are more than one displayed, select the Access Point by clicking on it, and click the **Yes** button to continue or **No** to exit the Setup Wizard.



Figure 5-3

5. On the *Enter Network Password* screen, enter the default password, **admin**, in the *Password* field. Then click the **OK** button. For added security, remember to change this password later through the Web-based Utility's *Password* screen.



Figure 5-4

6. As shown in Figure 5-5, the *Basic Settings* screen will appear next. Enter a unique name in the *AP Name* field. From the *Network Setting* drop-down menu, select **Automatically** if your network has a router or other DHCP server, or select **Static IP** if your network does not have a DHCP server. If you selected Static IP, then enter an IP Address and Subnet Mask appropriate for your network. Click the **Next** button to continue or **Back** to return to the previous page.

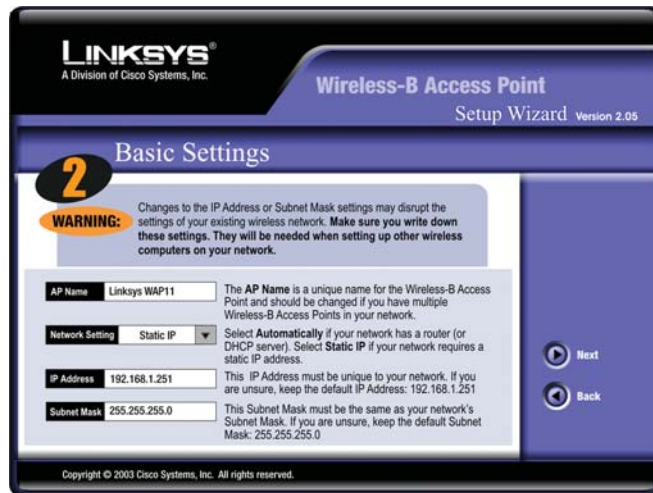


Figure 5-5

- **AP Name.** You may assign any name to the Access Point. Unique, memorable names are helpful, especially if you are using multiple access points on the same wireless network.
- **Network Setting.** Select **Automatically** if the Access Point will be assigned an IP address by your network router. Select **Static IP** if you will assign the Access Point a fixed IP address.
- **IP Address.** This IP address must be unique to your network. (The default IP address is **192.168.1.251**.) As this is a private IP address, there is no need to purchase a separate IP address from your service provider.
- **Subnet Mask.** The Access Point's Subnet Mask must be the same as your wired network.

7. As shown in Figure 5-6, the *Basic Wireless Settings* screen will now appear. Enter your wireless network's SSID, and select the channel at which the network broadcasts its wireless signal. Then, click the **Next** button to continue or **Back** to return to the previous page.

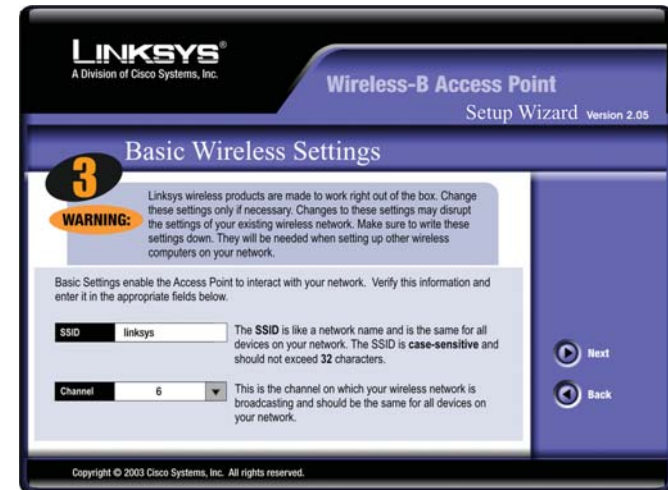


Figure 5-6

- **SSID.** The SSID is the unique name shared among all devices in a wireless network. The SSID must be identical for all devices in the wireless network. It is case-sensitive and must not exceed 32 characters, which may be any keyboard character.
- **Channel.** Select the appropriate channel from the list provided to correspond with your network settings. All devices in your wireless network must use the same channel in order to function correctly.

8. The *Security* screen (Figure 5-7) will appear next. From this screen, you will set the Wired Equivalent Privacy (WEP) encryption for your wireless network. Select a level of WEP encryption and enter a passphrase. Click the **Next** button to continue or **Back** to return to the previous page.

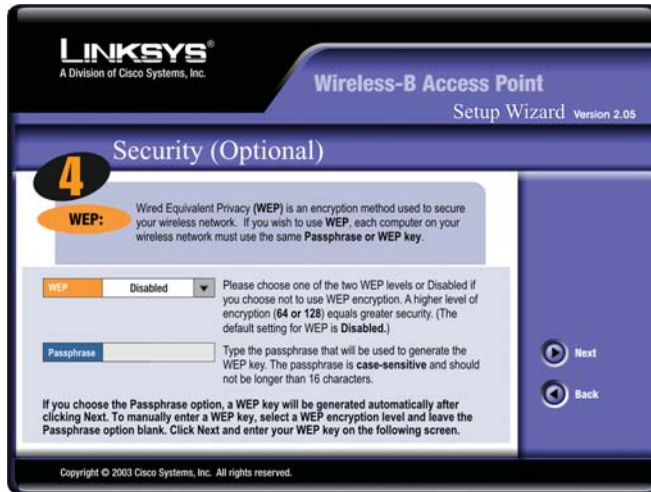


Figure 5-7

- **WEP.** In order to utilize WEP encryption, select the WEP setting from the pull-down menu, **64-bit (10 hex digits)** or **128-bit (26 hex digits)**. If you do not wish to utilize WEP encryption, make sure **Disabled** is selected. The Access Point's WEP encryption is unique to Linksys and may conflict with other vendors' WEP encryption.
- **Passphrase.** Instead of manually entering WEP keys, you can enter a Passphrase. This Passphrase is used to generate one or more WEP keys. It is case-sensitive and should not be longer than 16 alphanumeric characters. (The Passphrase function is compatible with Linksys wireless products only. If you want to communicate with non-Linksys wireless products, you will need to enter your WEP keys manually on the non-Linksys wireless products.)

9. The second *Security* screen, shown in Figure 5-8, shows the WEP key. If you entered a passphrase, then the *Key 1* field will display the automatically generated WEP key. If you did not enter a passphrase, then enter a WEP key in the *Key 1* field. Each device in your wireless network must use the same WEP key for the network to function properly. Click the **Next** button to continue or **Back** to return to the previous page.

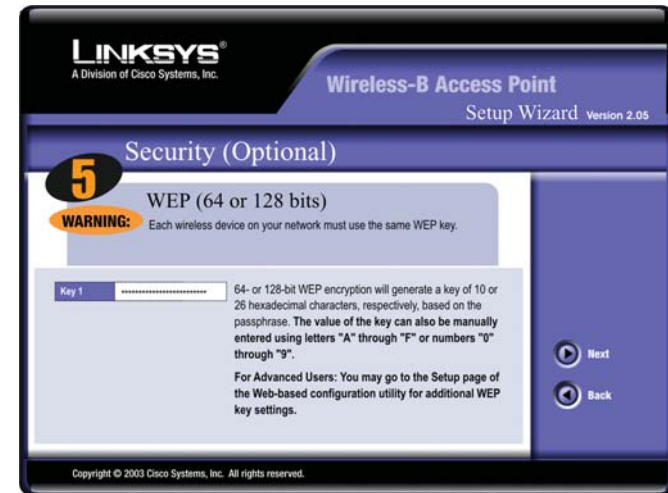


Figure 5-8

- **Key 1.** WEP keys enable you to create an encryption scheme for wireless LAN transmissions. If the WEP key hasn't been automatically generated, then manually enter a set of values. (Do not leave the field blank, and do not enter all zeroes. These are not valid key values.) If you are using 64-bit WEP encryption, then each key must consist of exactly 10 hexadecimal characters. If you are using 128-bit WEP encryption, then each key must consist of exactly 26 hexadecimal characters. Valid hexadecimal characters are "0"- "9" and "A"- "F".

10. The next screen (Figure 5-9) will allow you to review your settings. If these settings are correct, click the **Yes** button to save these settings. If there are any problems with the settings, click the **No** button to exit the Setup Wizard.



Figure 5-9

10. At this point, the configuration performed with the Setup Wizard is complete, as shown in Figure 5-10. To configure any other access points in your network, you can run this Setup Wizard again. Click the **Exit** button to exit the Setup Wizard.



Figure 5-10

Chapter 6: Configuring the Wireless-B Access Point



Note: The Access Point is designed to function properly after using the Setup Wizard. This chapter is provided solely for those who wish to perform more advanced configuration or monitoring.

The Access Point has been designed to be functional right out of the box, with the default settings in the Setup Wizard. However, if you'd like to change these settings, the Access Point can be configured through your web browser with the Web-based Utility. This chapter explains how to configure the Access Point in this manner.

Open your web browser and type the IP Address you entered in the Setup Wizard (the default IP address is **192.168.1.251**). Press the **Enter** key and the following screen, shown in Figure 6-1, will appear. Leave the *User Name* field blank. The first time you open the Web-based Utility, use the default password **admin**. You can set a new password on the *Password* screen shown in Figure 6-7.



Figure 6-1

The Setup Tab

The first screen that appears, shown in Figure 6-2, is the *Setup* tab. This allows you to change the Access Point's general settings. Change these settings as described here, and click the **Apply** button to apply your changes or **Cancel** to cancel your changes. If you require online help, click the **Help** button.

- **Firmware Version.** This displays the current version of the Access Point's firmware. Firmware should only be upgraded if you experience problems with the Access Point and can be upgraded from the *Help* tab.
- **AP Name.** You may assign any name to the Access Point. Unique, memorable names are helpful, especially if you are employing multiple access points on the same network. Verify this is the name you wish to use and click the **Apply** button to set it.

- **Obtain an IP Address Automatically.** Click this radio button to allow the Access Point to obtain a dynamic IP address from a DHCP server.
- **Specify an IP Address.** This IP address must be unique to your network. We suggest you use the default IP address of 192.168.1.251. As this is a private IP address, there is no need to purchase a separate IP address from your service provider. Verify the address and click the **Apply** button to save changes.
- **Subnet Mask.** The Access Point's Subnet Mask (or IP Mask) must be the same as your Ethernet network. Verify this is correct and click the **Apply** button to set it.
- **Gateway.** If you have assigned a static IP address to the Access Point, then enter the IP address of your network's Gateway, such as a router, in the *Gateway* field. If your network does not have a Gateway, then leave this field blank.

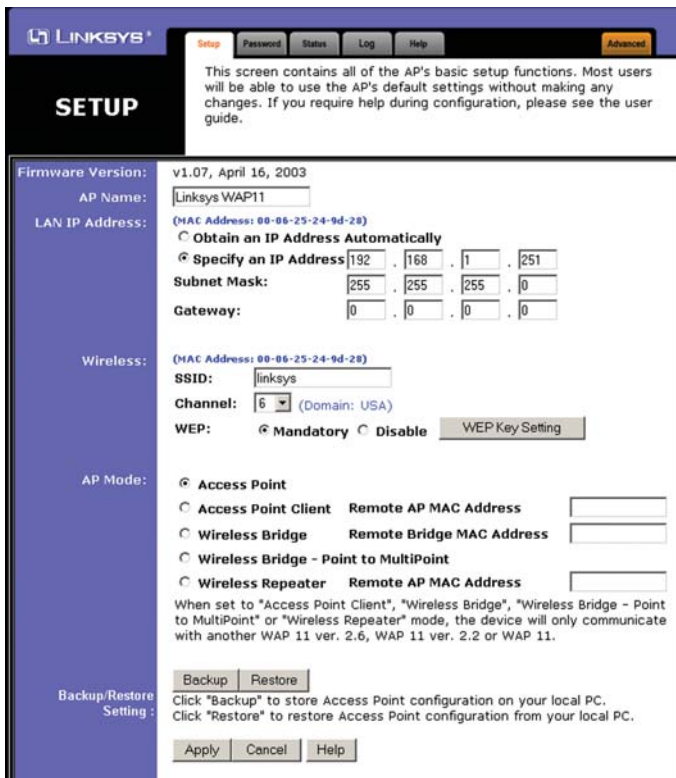


Figure 6-2

- **SSID.** The SSID is the unique name shared among all devices in a wireless network. The SSID must be identical for all devices in the wireless network. It is case-sensitive and must not exceed 32 alphanumeric characters, which may be any keyboard character.
- **Channel.** Select the appropriate channel from the list provided to correspond with your network settings, between 1 and 11 (in North America). All devices in your wireless network must use the same channel in order to function correctly.
- **WEP.** The WEP Encryption method is set to **Disable** by default. To enable WEP, click the **Mandatory** radio button, and then click the **WEP Key Setting** button to configure the WEP settings.

SETTING WEP ENCRYPTION:

If the *Disable* radio button is selected and you click the *WEP Key Setting* button, then the screen shown in Figure 6-3 will appear. Click the **OK** button to enable WEP encryption or **Cancel** to return to the *Setup* screen.



Figure 6-3

Set WEP encryption through the Web-based Utility by clicking the **WEP Key Setting** button on the *Setup* screen as shown in Figure 6-2.

This will open the *WEP Key Setting* screen, Figure 6-4. From this screen, you can select the type of WEP encryption to use and set the Passphrase for that encryption.

From the pull-down menu at the top of the screen, select **64-bit** or **128-bit** WEP encryption.

The *Mode* pull-down menu will allow you to set the Passphrase in hexadecimal or ASCII characters. Hexadecimal characters on your keyboard are the letters "A" through "F" and the numbers "0" through "9", while ASCII characters are any character on your keyboard.



Important: Always remember that each point in your wireless network **MUST** use the same WEP encryption method and encryption key, or else your wireless network will not function properly.

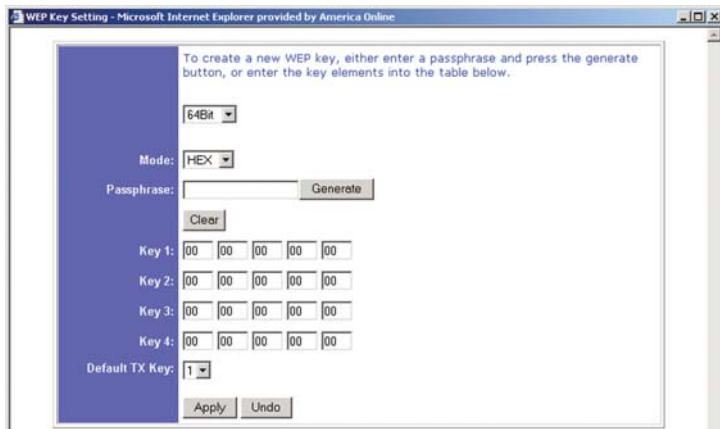


Figure 6-4

There are two ways to create WEP encryption keys. The first method is by typing a Passphrase into that field and clicking the **Generate** button. This will generate WEP encryption keys based upon that passphrase. A second method is to manually enter the WEP encryption keys in the available fields.

Click the **Clear** button to clear the *Passphrase* and *Key 1-4* fields.

In the *Default TX Key* drop-down menu, select the number of the key you want to use.

Click the **Apply** button to apply your changes, or click **Undo** to cancel your most recent change.

SETTING THE AP MODE:

The Access Point offers five modes of operation: Access Point, Access Point Client, Wireless Bridge, Wireless Bridge Point to MultiPoint, and Wireless Repeater. For all bridging modes, as well as Wireless Repeater mode, make sure the channel, SSID, and WEP keys are the same.



Note: For all modes of operation EXCEPT Access Point, the remote access point must be a second Linksys Wireless-B Access Point (WAP11). The Access Point will not communicate with any other kind of remote access point.

- **Access Point** - The *Operational Mode* is set to **Access Point** by default. This connects your wireless PCs to a wired network. In most cases, no change is necessary.

- **Access Point Client** - When set to Access Point Client mode, the Access Point Client is able to talk to one remote access point within its range. This mode allows the Access Point Client to act as a client of a remote access point. The Access Point Client cannot communicate directly with any wireless clients. A separate network attached to the Access Point Client can then be wirelessly bridged to the remote access point. Enter the required LAN MAC address of the remote access point in the *Remote AP MAC Address* field.
- **Wireless Bridge** - If you are trying to make a wireless connection between two wired networks, as shown in Figure 6-5, select **Wireless Bridge**. This mode connects two physically separated wired networks with two access points.

To configure a Wireless Bridge environment, click **Wireless Bridge** and enter the LAN MAC address of the remote access point in the *Remote Bridge MAC Address* field. The remote access point also needs to be set up as a Wireless Bridge.

Note: All devices on each wired network must be connected through a hub or switch.



Note: In Wireless Bridge mode, the Access Point can **ONLY** be accessed by another access point in Wireless Bridge mode. In order for your other wireless devices to access the Access Point, you must reset it to Access Point mode. The two modes are mutually exclusive.

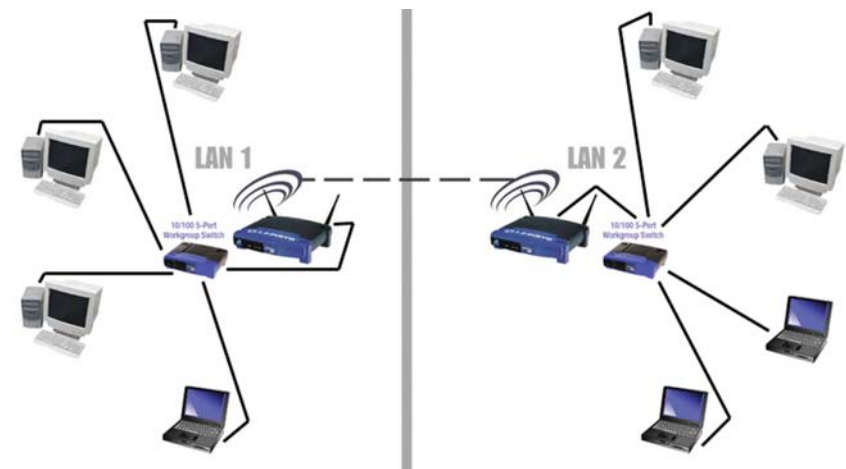


Figure 6-5

- **Wireless Bridge Point to MultiPoint** - If you are trying to make a wireless connection between more than two wired networks, as shown in Figure 6-6, select **Wireless Bridge Point to MultiPoint**. This mode allows you to construct a network that has multiple access points bridging wirelessly.

To configure a Wireless Bridge Point to MultiPoint environment, click **Wireless Bridge Point to MultiPoint** for the Access Point that will connect to multiple access points (in Figure 6-6, it is the Access Point in LAN 1). Then, for the other bridged access points, click **Wireless Bridge**, and enter the Remote Bridge MAC Address of the Access Point set to Point to MultiPoint.



Note: Linksys recommends bridging no more than three remote LANs in Wireless Bridge Point to MultiPoint mode. Bridging additional remote LANs will result in a significant decrease in bandwidth.

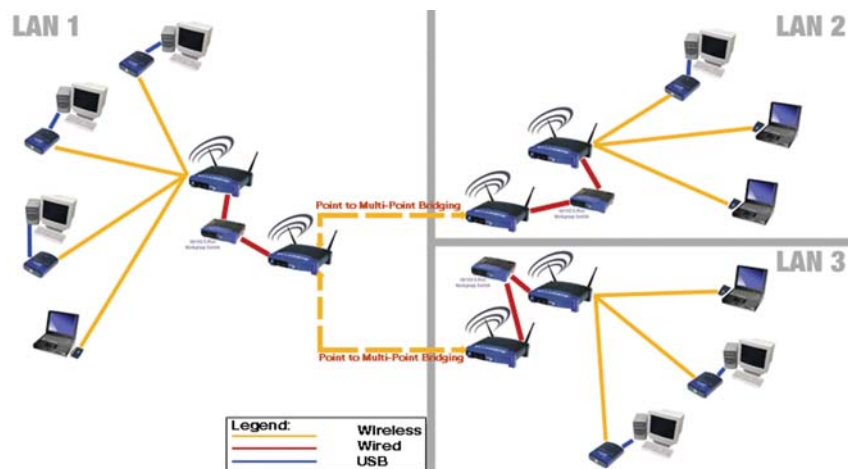


Figure 6-6

- **Wireless Repeater** - When set to Wireless Repeater mode, the Wireless Repeater is able to talk to one remote access point within its range and retransmit its signal. See Figure 6-7.

To configure a Wireless Repeater environment, click **Wireless Repeater** and enter the LAN MAC address of the remote access point in the *Remote AP MAC Address* field.

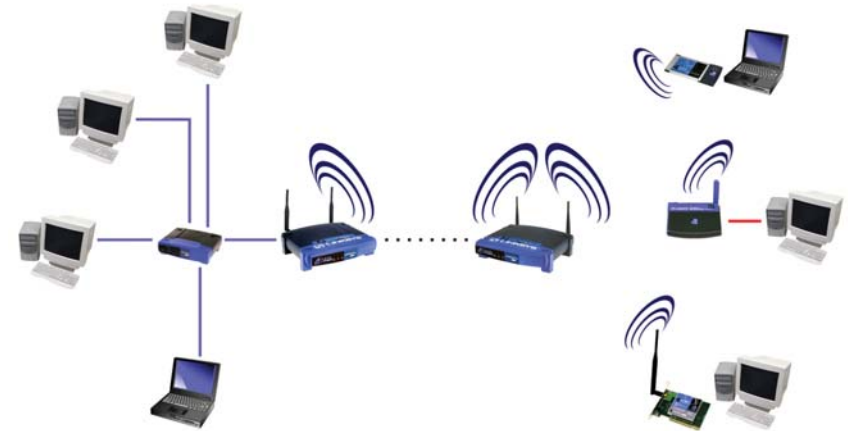


Figure 6-7

- **Backup and Restore.** Clicking the **Backup** button will store the Access Point's configuration to your PC's hard drive. You can restore this information by clicking the **Restore** button.

Click the **Apply** button to apply your changes or **Cancel** to cancel your changes. If you require online help, click the **Help** button.

The Password Tab

The *Password* tab, shown in Figure 6-8, allows you to change the Access Point's password and restore factory defaults.

Changing the password for the Access Point is as easy as typing the password into the *AP Password* field. Then, type it again into the second field to confirm.

To restore the Access Point's factory default settings, click the **Yes** button beside *Restore Factory Defaults*.



Important: Restoring the Access Point's factory defaults will erase all of your settings (WEP Encryption, Wireless and LAN settings, etc.), replacing them with the factory defaults. Do not reset the Access Point if you want to retain these settings

LINKSYS®

Setup Password **Status** Log Help Advanced

PASSWORD

For security reasons, you should set a password on your AP. Your password must be less than 64 characters, and it cannot contain any spaces.

AP Password: (Enter New Password)
 (Re-enter To Confirm)

Restore Factory Defaults: Yes No

Apply Cancel Help

Figure 6-8

Click the **Apply** button to apply your changes or **Cancel** to cancel your changes. If you require online help, click the **Help** button.

The Status Tab

The *Status* tab, shown in Figure 6-9, will display current information on the Access Point, its settings, and its performance.

LINKSYS®

Setup Password **Status** Log Help Advanced

STATUS

This screen displays the AP's current status and settings. This information is read-only.

Firmware Version: v1.06, Nov. 14, 2002

LAN: (MAC Address: 00-06-25-00-ea-01)

IP Address:	192.168.1.251
Subnet Mask:	255.255.255.0
Gateway:	0.0.0.0
Send:	Good Packets: 216
	Dropped Packets: 0
Rcv:	Good Packets: 165
	Dropped Packets: 0

Wireless: (MAC Address: 00-06-25-00-ea-01)

SSID :	linksys
Encryption Function:	Enable
Channel:	6
Send:	Good Packets: 0
	Dropped Packets: 0
Rcv:	Good Packets: 6
	Dropped Packets: 99

In wireless transmission, some dropped packets occurrence is normal.

Figure 6-9

- **Firmware Version.** This displays the current version of the Access Point's firmware. Firmware should only be upgraded if you experience problems with the Access Point and can be upgraded from the *Help* tab.

LAN

- **IP Address.** This IP address is the unique IP address of the Access Point.
- **Subnet Mask.** The Access Point's Subnet Mask (also known as an IP Mask), matches the Subnet Mask of your Ethernet network.

- **Gateway.** This displays the IP address of your network's Gateway.
- **Send and Recv.** The *Send* and *Recv* fields display the number of successful or dropped packets that have been sent or received.

Wireless

- **SSID.** The unique name shared among all devices in your wireless network is displayed here.
- **Encryption Function.** The encryption method you chose in the Setup Wizard or changed from the *Setup* tab of this Web-based Utility is displayed here.
- **Channel.** The wireless channel shared by all wireless devices connected to this Access Point is displayed here.
- **Send and Recv.** The *Send* and *Recv* fields display the number of successful or dropped packets that have been sent or received. Some packet loss is normal in wireless networking.

The Log Tab

To view a log of the Access Point's activity, select the **Log** tab, shown in Figure 6-10.

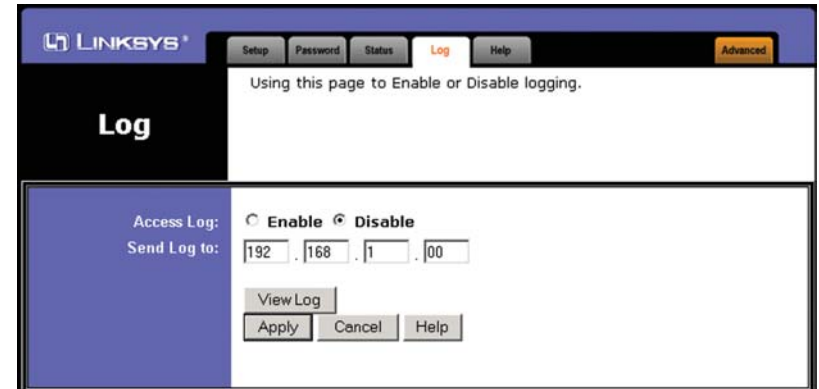


Figure 6-10

To enable permanent logging activity, click the **Enable** radio button beside *Access Log*. The default setting for this function is **Disable**.

If you have chosen to monitor the Access Point's traffic, then you can designate a PC that will receive permanent log files periodically. In the *Send Log to* field, enter the IP address of this PC. To view these permanent logs, you must use Logviewer software, which can be downloaded free of charge from www.linksys.com.

To see a temporary log of the Access Point's most recent activities, click the **View Log** button.

Click the **Apply** button to apply your changes or **Cancel** to cancel your changes. If you require online help, click the **Help** button.

The Help Tab

For help on the various tabs in this Web-based Utility, along with upgrading the Access Point's firmware and viewing this User Guide, click the **Help** tab, shown in Figure 6-11.

The help files for the various tabs in this Web-based Utility are listed by tab name on the lefthand side of the screen.

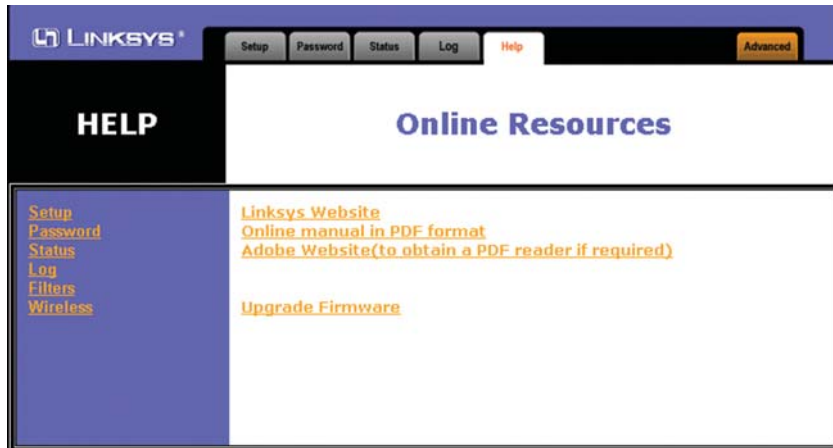


Figure 6-11

Click the **Linksys Website** link to connect to the Linksys homepage for Knowledgebase help files and information about other Linksys products, provided you have an active Internet connection.

For an **Online manual in PDF format**, click that text link. The User Guide will appear in Adobe pdf format. If you do not have the Adobe PDF Reader installed on your computer, click the **Adobe Website** link or go to the Setup Wizard CD-ROM to download this software. (To access the Adobe website, you will need an active Internet connection.) To download from the CD-ROM, click the **Start** button and select **Run**. Type **D:\Acrobat** (if "D" is the letter of your CD-ROM drive).

New firmware versions are posted at www.linksys.com and can be downloaded for free. If the Access Point is not experiencing difficulties, then there is no need to download a more recent firmware version, unless that version has a new feature that you want to use. Loading new firmware does not always enhance the speed or quality of your Internet connection.



Note: When you upgrade the Access Point's firmware, you may lose the Access Point's current configuration settings.

To upgrade the Access Point's firmware:

1. Download the firmware upgrade file from the Linksys website.
2. Extract the firmware upgrade file.
3. Click the **Upgrade Firmware** button on the *Help* screen.
4. Enter the location of the firmware upgrade file in the *File Path* field, or click the **Browse** button to find the firmware upgrade file.
5. Double-click the firmware upgrade file.
6. Click the **Upgrade** button, and follow the on-screen instructions.

Click the **Cancel** button to cancel the firmware upgrade.

The Filter Tab

To access the *Filter* tab, first click the **Advanced** tab. The *Filter* tab, shown in Figure 6-12, allows you to control which computers may or may not communicate with the Access Point—depending on their MAC addresses.

To enable filtering of computers by their MAC addresses, click the **Enable** radio button. To disable this feature, click the **Disable** radio button.

Next, determine if the Access Point will **deny** access only to the MAC addresses you will specify, OR if the Access Point will **allow** access only to the MAC addresses you will specify. Click the radio button next to the option that is appropriate.

Above the *MAC Address* fields, there is a pull-down menu. For computers one through ten on your wireless network, **1~10** is selected by default. If you have more than ten computers on your wireless network, use this pull-down menu to select **11~20**, **21~30**, etc., up to a maximum of 50 MAC addresses.



Figure 6-12

Then, type the MAC address(es) you wish to filter in the *MAC Address* fields.

When you've completed making any changes on this tab, click the **Apply** button to save those changes or **Undo** to cancel your changes. For more information on this tab, click the **Help** button.

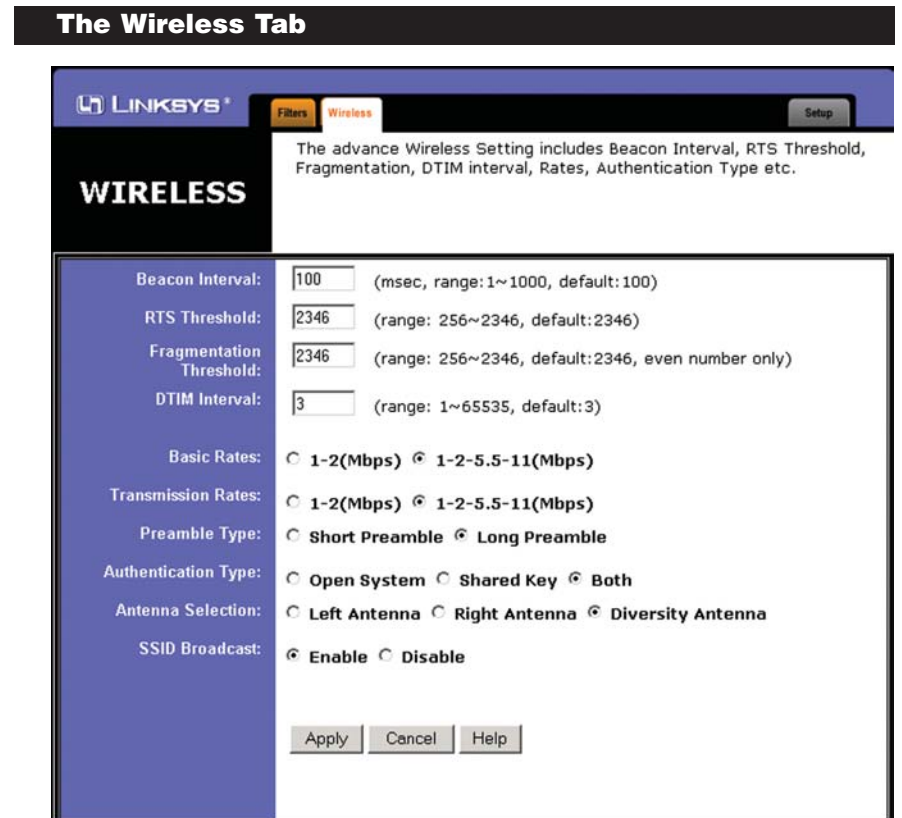


Figure 6-13

Before making any changes to the *Wireless* tab, shown in Figure 6-13, please check your wireless settings on your other systems, as these changes will alter the effectiveness of the Access Point. In most cases, these wireless settings do not need to be changed.

- **Beacon Interval.** This value indicates the frequency interval of the beacon. A beacon is a packet broadcast by the Access Point to keep the network synchronized. A beacon includes the wireless LAN service area, the AP address, the Broadcast destination addresses, a time stamp, Delivery Traffic Indicator Maps, and the Traffic Indicator Message (TIM).

- **RTS Threshold.** This value should remain at its default setting of 2346. Should you encounter inconsistent data flow, only minor reductions are recommended.
- **Fragmentation Threshold.** This value specifies the maximum size for a packet before data is fragmented into multiple packets. It should remain at its default setting of 2346. A smaller setting means smaller packets, which will create more packets for each transmission. Only minor reductions of this value are recommended.
- **DTIM Interval.** This value indicates the interval of the Delivery Traffic Indication Message (DTIM). A DTIM field is a countdown field informing clients of the next window for listening to broadcast and multicast messages. When the Access Point has buffered broadcast or multicast messages for associated clients, it sends the next DTIM with a DTIM Interval value. Access Point Clients hear the beacons and awaken to receive the broadcast and multicast messages.
- **Basic Rates.** The basic rate is the minimum speed at which a wireless client is allowed to connect to the Access Point.
- **Transmission Rates.** The transmission rates should be set depending on the speed of your wireless network. You must select **1-2 (Mbps)** if you have older 802.11 compliant equipment on your network, such as wireless adapters that support only 1 or 2 Mbps. Selecting 1-2 (Mbps), however, does NOT limit the transmission rates of faster adapters.
- **Preamble Type.** The preamble defines the length of the CRC block for communication between the Access Point and a roaming wireless network adapter. (High network traffic areas should use the shorter preamble type.) Select the appropriate preamble type and click the **Apply** button to set it. All wireless devices on your network should use the same preamble type.
- **Authentication Type.** You may choose between **Open System**, **Shared Key**, and **Both**. The Authentication Type default is set to **Open System**. Shared Key is when both the sender and the recipient share a secret key. All devices on your network must use the same authentication type. It is recommended that you use the default setting, **Both**.
- **Antenna Selection.** This selection is for choosing which antenna transmits data. By default, the Diversity Antenna selection, used to increase reception, is chosen.

- **SSID Broadcast.** For security purposes, this selection can be disabled, allowing only those wireless network adapters with the Access Point's SSID to communicate with the Access Point. By default, this selection is enabled, allowing all wireless network adapters in your wireless network to communicate with the Access Point.



Important: The Access Point will not be recognized by “site-survey” utilities, such as the Microsoft® Windows® XP Zero Configuration Utility, if SSID Broadcast is disabled.

When you've completed making any changes on this tab, click the **Apply** button to save those changes or **Cancel** to cancel your changes. For more information on this tab, you can click the **Help** button.

Appendix A: Troubleshooting

This chapter provides a list of questions and answers regarding the operation of the Access Point. Read the description below to solve your problems. If you can't find an answer here, check the Linksys website at www.linksys.com.

Common Problems and Solutions

1. I am getting interference between my 2.4GHz phone system and my wireless network.

There are a few steps you can take:

- Change the channel of the phone or the Access Point so they use different channels.
- Move the phone's base station so that it's farther away from the Access Point.
- If there is still too much interference, you may have to buy a different phone system, either 900MHz or 5GHz.

1. I need to extend the range of my wireless network.

Set the Access Point to Wireless Repeater mode, and buy a second Wireless-B Access Point (WAP11), which will re-transmit the first Access Point's signal.

Frequently Asked Questions

Can the Access Point act as my DHCP Server?

No. The Access Point is nothing more than a wireless hub, and as such, cannot be configured to handle DHCP capabilities.

Can I run an application from a remote computer over the wireless network?

This will depend on whether or not the application is designed to be used over a network. Consult the application's user guide to determine if it supports operation over a network.

Can I play multiplayer games with other users of the wireless network?

Yes, as long as the game supports multiple players over a LAN (local area network). Refer to the game's user guide for more information.

What is the IEEE 802.11b standard?

It is one of the IEEE standards for wireless networks. The 802.11b standard allows wireless networking hardware from different manufacturers to communicate, provided that the hardware complies with the 802.11b standard. The 802.11b standard states a maximum data transfer rate of 11Mbps and an operating frequency of 2.4GHz.

What IEEE 802.11b features are supported?

The product supports the following IEEE 802.11 functions:

- CSMA/CA plus Acknowledge protocol
- Multi-Channel Roaming
- Automatic Rate Selection
- RTS/CTS feature
- Fragmentation
- Power Management

What is ad-hoc mode?

When a wireless network is set to ad-hoc mode, the wireless-equipped computers are configured to communicate directly with each other. The ad-hoc wireless network will not communicate with any wired network.

What is infrastructure mode?

When a wireless network is set to infrastructure mode, the wireless network is configured to communicate with a wired network through a wireless access point.

What is roaming?

Roaming is the ability of a portable computer user to communicate continuously while moving freely throughout an area greater than that covered by a single wireless network access point. Before using the roaming function, the workstation must make sure that it is the same channel number as the wireless network access point of the dedicated coverage area.

To achieve true seamless connectivity, the wireless LAN must incorporate a number of different functions. Each node and wireless network access point, for example, must always acknowledge receipt of each message. Each node must maintain contact with the wireless network even when not actually transmitting data. Achieving these functions simultaneously requires a dynamic RF networking technology that links wireless network access points and nodes. In such a system, the user's end node undertakes a search for the best possible access to the system. First, it evaluates such factors as signal strength and quality, as well as the message load currently being carried by each wireless network access point and the distance of each wireless network access point to the wired backbone. Based on that information, the node next selects the right wireless network access point and registers its address. Communications between end node and host computer can then be transmitted up and down the backbone.

As the user moves on, the end node's RF transmitter regularly checks the system to determine whether it is in touch with the original wireless network access point or whether it should seek a new one. When a node no longer receives acknowledgment from its original wireless network access point, it undertakes a new search. Upon finding a new wireless network access point, it then re-registers, and the communication process continues.

What is ISM band?

The FCC and their counterparts outside of the U.S. have set aside bandwidth for unlicensed use in the ISM (Industrial, Scientific and Medical) band. Spectrum in the vicinity of 2.4 GHz, in particular, is being made available worldwide. This presents a truly revolutionary opportunity to place convenient high speed wireless capabilities in the hands of users around the globe.

What is Spread Spectrum?

Spread Spectrum technology is a wideband radio frequency technique developed by the military for use in reliable, secure, mission-critical communications systems. It is designed to trade off bandwidth efficiency for reliability, integrity, and security. In other words, more bandwidth is consumed than in the case of narrowband transmission, but the trade-off produces a signal that is, in effect, louder and thus easier to detect, provided that the receiver knows the parameters of the spread-spectrum signal being broadcast. If a receiver is not tuned to the right frequency, a spread-spectrum signal looks like background noise. There are two main alternatives, Direct Sequence Spread Spectrum (DSSS) and Frequency Hopping Spread Spectrum (FHSS).

What is DSSS? What is FHSS? And what are their differences?

Frequency Hopping Spread Spectrum (FHSS) uses a narrowband carrier that changes frequency in a pattern that is known to both transmitter and receiver. Properly synchronized, the net effect is to maintain a single logical channel. To an unintended receiver, FHSS appears to be short-duration impulse noise. Direct Sequence Spread Spectrum (DSSS) generates a redundant bit pattern for each bit to be transmitted. This bit pattern is called a chip (or chipping code). The longer the chip, the greater the probability that the original data can be recovered. Even if one or more bits in the chip are damaged during transmission, statistical techniques embedded in the radio can recover the original data without the need for retransmission. To an unintended receiver, DSSS appears as low power wideband noise and is rejected (ignored) by most narrowband receivers.

Would the information be intercepted while transmitting on air?

Linksys wireless products feature two-fold protection in security. On the hardware side, as with Direct Sequence Spread Spectrum technology, it has the inherent security feature of scrambling. On the software side, Linksys wireless products offer the encryption function (WEP) to enhance security and access control. Users can set it up depending upon their needs.

Can Linksys wireless products support file and printer sharing?

Linksys wireless products perform the same function as LAN products. Therefore, they can work with NetWare, Windows NT/2000, or other LAN operating systems to support printer or file sharing.

What is WEP?

WEP is Wired Equivalent Privacy, a data privacy mechanism based on a 40/64 bit shared key algorithm, as described in the IEEE 802.11 standard.

What is a MAC Address?

The Media Access Control (MAC) address is a unique number assigned by the manufacturer to any Ethernet networking device, such as a network adapter, that allows the network to identify it at the hardware level. For all practical purposes, this number is usually permanent. Unlike IP addresses, which can change every time a computer logs on to the network, the MAC address of a device stays the same, making it a valuable identifier for the network.

Appendix B: Setting Up the TCP/IP Protocol

Setting Up TCP/IP in Windows

Before a computer can communicate with the Access Point, it must be configured with the TCP/IP protocol. If you know how to set up TCP/IP on your computers, do so now. Otherwise, use the guidelines below to help get TCP/IP installed on all of the computers that need to communicate with the Access Point. If you are unable to successfully install TCP/IP on one or more computers after following the directions, contact the manufacturer of your computer's network operating system for further assistance. Check with your network administrator for your TCP/IP settings.

The directions below provide general guidelines for coming up with IP addresses and subnet masks. Check with your network administrator to see if you need to use specific IP addresses or DHCP settings.

First, each computer on the network will require an IP address, which is a series of numbers, separated by periods, identifying the PC on the network. To make things simple, it is recommended you use the following numbering scheme:

192.168.1.X

In this example, X is a unique, arbitrarily assigned number from 1 to 254. Each computer must have its own unique X number. Note: Never use 0 or 255 for X. These numbers are reserved by TCP/IP for other uses.

For example, if you have three computers, you could number them as follows:

192.168.1.17
192.168.1.44
192.168.1.126

In this case, 17, 44, and 126 are arbitrary numbers between 1 and 254.

Each computer will also require a subnet mask, which is a numerical "filter" that tells a computer what kinds of TCP/IP data packets to accept. If you're not sure which mask to use, the following mask is recommended:

255.255.255.0

The following instructions are provided as examples for reference only. For complete instructions on installing and troubleshooting TCP/IP, consult your Windows operating system documentation.

TCP/IP Setup for Windows 98 and Millennium

1. Click the **Start** button, and select **Settings**. Open the **Control Panel**. Inside the Control Panel, double-click the **Network** icon.
2. If the *TCP/IP Protocol* is listed for your network adapter, go to step five. Otherwise, click the **Add** button.
3. When the *Component Type* window appears, select **Protocol**, and click the **Add** button.
4. Select **Microsoft** in the *Manufacturers* list and choose **TCP/IP** in the *Network Protocols* list. Then, click the **OK** button.
5. When the *Network* window reappears, click **TCP/IP**, and then click the **Properties** button.
6. Select **Specify an IP Address**.
7. Enter an IP Address for the computer, along with a Subnet Mask. Click the **OK** button. If you do not have these values, consult your network administrator.
8. When the *Network* window reappears, click the **OK** button. Restart your machine. TCP/IP has now been successfully installed.

TCP/IP Setup for Windows 2000

1. At the Windows 2000 desktop, right-click **My Network Places**. Then, right-click **Local Area Connection**. Choose **Properties**.
2. If the *TCP/IP Protocol* is listed for your network adapter, go to step five. Otherwise, click the **Install** button.
3. When the *Component Type* window appears, select **Protocol**, and click the **Install** button.
4. Select **Internet Protocol (TCP/IP)** from the list, and click the **OK** button.
5. When the *Network* window reappears, select **TCP/IP**, and click the **Properties** button.
6. Select **Use the following IP Address**.
7. Enter an IP Address for the computer, along with a Subnet Mask and Default Gateway. Then, click the **OK** button. If you do not have these values, consult your network administrator.
8. When the *Network* window reappears, click the **OK** button. Restart your computer. TCP/IP has now been successfully installed.

TCP/IP Setup for Windows XP

1. At the Windows XP desktop, click **Start**. Then click the **Control Panel** icon. Click **Network and Internet Connections**. Click **Network Connections**. Then double-click the appropriate **Local Area Connection**, and click the **Properties** button.
2. If the *TCP/IP Protocol* is listed for your network adapter, go to step five. Otherwise, click the **Install** button.
3. Select **Protocol**, and then click the **Add** button.
4. Select **Internet Protocol (TCP/IP)** from the list, and click the **OK** button.
5. Select **TCP/IP**, and click the **Properties** button.
6. Select **Use the following IP Address**.
7. Enter an IP address for the computer, along with a Subnet mask and Default gateway address. Then, click the **OK** button. If you do not have these values, consult your network administrator.
8. When you're finished, click the **Close** button. Restart your computer. TCP/IP has now been successfully installed.

Appendix C: Glossary

Adapter - Printed circuit board that plugs into a PC to add to capabilities or connectivity to a PC. In a networked environment, a network interface card is the typical adapter that allows the PC or server to connect to the intranet and/or Internet.

Ad-hoc Network - An ad-hoc network is a group of computers, each with a wireless adapter, connected as an independent 802.11 wireless LAN. Ad-hoc wireless computers operate on a peer-to-peer basis, communicating directly with each other without the use of an access point. Ad-hoc mode is also referred to as an Independent Basic Service Set (IBSS) or as peer-to-peer mode, and is useful at a departmental scale or SOHO operation.

Backbone - The part of a network that connects most of the systems and networks together and handles the most data.

Bandwidth - The transmission capacity of a given facility, in terms of how much data the facility can transmit in a fixed amount of time; expressed in bits per second (bps).

Beacon Interval - A beacon is a packet broadcast by the Access Point to keep the network synchronized. A beacon includes the wireless LAN service area, the AP address, the Broadcast destination addresses, a time stamp, Delivery Traffic Indicator Maps, and the Traffic Indicator Message (TIM).

Bit - A binary digit. The value - 0 or 1-used in the binary numbering system. Also, the smallest form of data.

Browser - A browser is an application program that provides a way to look at and interact with all the information on the World Wide Web or PC. The word "browser" seems to have originated prior to the Web as a generic term for user interfaces that let you browse text files online.

BSS (Basic Service Set) - An infrastructure network connecting wireless devices to a wired network using a single access point.

Buffer - A buffer is a shared or assigned memory area used by hardware devices or program processes that operate at different speeds or with different sets of priorities. The buffer allows each device or process to operate without

being held up by the other. In order for a buffer to be effective, the size of the buffer and the algorithms for moving data into and out of the buffer need to be considered by the buffer designer. Like a cache, a buffer is a "midpoint holding place" but exists not so much to accelerate the speed of an activity as to support the coordination of separate activities.

CSMA/CA (Carrier Sense Multiple Access/Collision Avoidance) - In local area networking, this is the CSMA technique that combines slotted time-division multiplexing with carrier sense multiple access/collision detection (CSMA/CD) to avoid having collisions occur a second time. This works best if the time allocated is short compared to packet length and if the number of situations is small.

CSMA/CD (Carrier Sense Multiple Access/Collision Detection) - The LAN access method used in Ethernet. When a device wants to gain access to the network, it checks to see if the network is quiet (senses the carrier). If it is not, it waits a random amount of time before retrying. If the network is quiet and two devices access the line at exactly the same time, their signals collide. When the collision is detected, they both back off and each wait a random amount of time before retrying.

Database - A database is a collection of data that is organized so that its contents can easily be accessed, managed, and updated.

DHCP (Dynamic Host Configuration Protocol) - A protocol that lets network administrators manage centrally and automate the assignment of Internet Protocol (IP) addresses in an organization's network. Using the Internet's set of protocol (TCP/IP), each machine that can connect to the Internet needs a unique IP address. When an organization sets up its computer users with a connection to the Internet, an IP address must be assigned to each machine. Without DHCP, the IP address must be entered manually at each computer and, if computers move to another location in another part of the network, a new IP address must be entered. DHCP lets a network administrator supervise and distribute IP addresses from a central point and automatically sends a new IP address when a computer is plugged into a different place in the network.

DHCP uses the concept of a "lease" or amount of time that a given IP address will be valid for a computer. The lease time can vary depending on how long a user is likely to require the Internet connection at a particular location. It's especially useful in education and other environments where users change frequently. Using very short leases, DHCP can dynamically reconfigure networks in which there are more computers than there are available IP addresses.

DHCP supports static addresses for computers containing Web servers that need a permanent IP address.

Download - To receive a file transmitted over a network. In a communications session, download means receive, upload means transmit.

Driver - A workstation or server software module that provides an interface between a device and the upper-layer protocol software running in the computer; it is designed for a specific device, and is installed during the initial installation of a network-compatible client or server operating system.

DSSS (Direct-Sequence Spread-Spectrum) - DSSS generates a redundant bit pattern for all transmitted data. This bit pattern is called a chip (or chipping code). Even if one or more bits in the chip are damaged during transmission, statistical techniques embedded in the receiver can recover the original data without the need for retransmission. To an unintended receiver, DSSS appears as low power wideband noise and is rejected (ignored) by most narrowband receivers. However, to an intended receiver (i.e. another wireless LAN endpoint), the DSSS signal is recognized as the only valid signal, and interference is inherently rejected (ignored).

DTIM (Delivery Traffic Indication Message) - A DTIM field is a countdown field informing clients of the next window for listening to broadcast and multicast messages. When the AP has buffered broadcast or multicast messages for associated clients, it sends the next DTIM with a DTIM Interval value. AP Clients hear the beacons and awaken to receive the broadcast and multicast messages.

Dynamic IP Address - An IP address that is automatically assigned to a client station in a TCP/IP network, typically by a DHCP server. Network devices that serve multiple users, such as servers and printers, are usually assigned static IP addresses.

Encryption - A security method that applies a specific algorithm to data in order to alter the data's appearance and prevent other devices from reading the information.

ESS (Extended Service Set) - A set of more than two or more BSSs (multiple access points) forming a single network.

Ethernet - IEEE standard network protocol that specifies how data is placed on and retrieved from a common transmission medium. Has a transfer rate of

10 Mbps. Forms the underlying transport vehicle used by several upper-level protocols, including TCP/IP and XNS.

FHSS (Frequency Hopping Spread Spectrum) - FHSS continuously changes the center frequency of a conventional carrier several times per second according to a pseudo-random set of channels, while chirp spread spectrum changes the carrier frequency. Because a fixed frequency is not used, illegal monitoring of spread spectrum signals is extremely difficult, if not downright impossible depending on the particular method.

Firmware - Code that is written onto read-only memory (ROM) or programmable read-only memory (PROM). Once firmware has been written onto the ROM or PROM, it is retained even when the device is turned off.

Fragmentation - Breaking a packet into smaller units when transmitting over a network medium that cannot support the original size of the packet.

Gateway - A device that interconnects networks with different, incompatible communications protocols.

Hardware - Hardware is the physical aspect of computers, telecommunications, and other information technology devices. The term arose as a way to distinguish the "box" and the electronic circuitry and components of a computer from the program you put in it to make it do things. The program came to be known as the software.

Hub - The device that serves as the central location for attaching wires from workstations. Can be passive, where there is no amplification of the signals; or active, where the hubs are used like repeaters to provide an extension of the cable that connects to a workstation.

IEEE (The Institute of Electrical and Electronics Engineers) - The IEEE describes itself as "the world's largest technical professional society, promoting the development and application of electrotechnology and allied sciences for the benefit of humanity, the advancement of the profession, and the well-being of our members."

The IEEE fosters the development of standards that often become national and international standards. The organization publishes a number of journals, has many local chapters, and several large societies in special areas, such as the IEEE Computer Society.

Infrastructure Network - An infrastructure network is a group of computers or other devices, each with a wireless adapter, connected as an 802.11 wireless LAN. In infrastructure mode, the wireless devices communicate with each other and to a wired network by first going through an access point. An infrastructure wireless network connected to a wired network is referred to as a Basic Service Set (BSS). A set of two or more BSS in a single network is referred to as an Extended Service Set (ESS). Infrastructure mode is useful at a corporation scale, or when it is necessary to connect the wired and wireless networks.

IP Address - In the most widely installed level of the Internet Protocol (Internet Protocol) today, an IP address is a 32-binary digit number that identifies each sender or receiver of information that is sent in packet across the Internet. When you request an HTML page or send e-mail, the Internet Protocol part of TCP/IP includes your IP address in the message (actually, in each of the packets if more than one is required) and sends it to the IP address that is obtained by looking up the domain name in the Uniform Resource Locator you requested or in the e-mail address you're sending a note to. At the other end, the recipient can see the IP address of the Web page requestor or the e-mail sender and can respond by sending another message using the IP address it received.

ISM band - The FCC and their counterparts outside of the U.S. have set aside bandwidth for unlicensed use in the ISM (Industrial, Scientific and Medical) band. Spectrum in the vicinity of 2.4 GHz, in particular, is being made available worldwide. This presents a truly revolutionary opportunity to place convenient high-speed wireless capabilities in the hands of users around the globe.

LAN - A local area network (LAN) is a group of computers and associated devices that share a common communications line and typically share the resources of a single processor or server within a small geographic area (for example, within an office building).

MAC (Media Access Control) Address - A unique number assigned by the manufacturer to any Ethernet networking device, such as a network adapter, that allows the network to identify it at the hardware level.

Mbps (MegaBits Per Second) - One million bits per second; unit of measurement for data transmission.

Multicasting - Sending data to a group of nodes instead of a single destination.

Network - A system that transmits any combination of voice, video and/or data between users.

Node - A network junction or connection point, typically a computer or work station.

Packet - A unit of data routed between an origin and a destination in a network.

Passphrase - Used much like a password, a passphrase simplifies the WEP encryption process by automatically generating the WEP encryption keys for Linksys products.

PC Card - A credit-card sized removable module that contains memory, I/O, or a hard disk.

Port - A pathway into and out of the computer or a network device such as a switch or router. For example, the serial and parallel ports on a personal computer are external sockets for plugging in communications lines, modems and printers.

RJ-45 (Registered Jack-45) - A connector similar to a telephone connector that holds up to eight wires, used for connecting Ethernet devices.

Roaming - In an infrastructure mode wireless network, this refers to the ability to move out of one access point's range and into another and transparently reassociate and reauthenticate to the new access point. This reassociation and reauthentication should occur without user intervention and ideally without interruption to network connectivity. A typical scenario would be a location with multiple access points, where users can physically relocate from one area to another and easily maintain connectivity.

Router - Protocol-dependent device that connects subnetworks together. Routers are useful in breaking down a very large network into smaller subnetworks; they introduce longer delays and typically have much lower throughput rates than bridges.

RTS (Request To Send) - An RS-232 signal sent from the transmitting station to the receiving station requesting permission to transmit.

Server - Any computer whose function in a network is to provide user access to files, printing, communications, and other services.

Software - Instructions for the computer. A series of instructions that performs a particular task is called a “program.” The two major categories of software are “system software” and “application software.” System software is made up of control programs such as the operating system and database management system (DBMS). Application software is any program that processes data for the user.

A common misconception is that software is data. It is not. Software tells the hardware how to process the data.

SOHO (Small Office/Home Office) - Market segment of professionals who work at home or in small offices.

Spread Spectrum - Spread Spectrum technology is a wideband radio frequency technique developed by the military for use in reliable, secure, mission-critical communications systems. It is designed to trade off bandwidth efficiency for reliability, integrity, and security. In other words, more bandwidth is consumed than in the case of narrowband transmission, but the trade off produces a signal that is, in effect, louder and thus easier to detect, provided that the receiver knows the parameters of the spread-spectrum signal being broadcast. If a receiver is not tuned to the right frequency, a spread-spectrum signal looks like background noise. There are two main alternatives, Direct Sequence Spread Spectrum (DSSS) and Frequency Hopping Spread Spectrum (FHSS).

SSID (Service Set Identifier) - A unique name shared among all points in a wireless network. The SSID must be identical for each point in the wireless network and is case-sensitive. Also known as “ESSID.”

Static IP Address - A permanent IP address that is assigned to a node in an IP or a TCP/IP network.

Subnet Mask - The method used for splitting IP networks into a series of subgroups, or subnets. The mask is a binary pattern that is matched up with the IP address to turn part of the host ID address field into a field for subnets.

Switch - 1. A data switch connects computing devices to host computers, allowing a large number of devices to share a limited number of ports. 2. A device for making, breaking, or changing the connections in an electrical circuit.

TCP (Transmission Control Protocol) - A method (protocol) used along with the IP (Internet Protocol) to send data in the form of message units (datagram)

between network devices over a LAN or WAN. While IP takes care of handling the actual delivery of the data (routing), TCP takes care of keeping track of the individual units of data (called packets) that a message is divided into for efficient delivery over the network. TCP is known as a "connection oriented" protocol due to requiring the receiver of a packet to return an acknowledgment of receipt to the sender of the packet resulting in transmission control.

TCP/IP (Transmission Control Protocol/Internet Protocol) - The basic communication language or set of protocols for communications over a network (developed specifically for the Internet). TCP/IP defines a suite or group of protocols and not only TCP and IP.

Throughput - The amount of data moved successfully from one place to another in a given time period.

Topology - A network's topology is a logical characterization of how the devices on the network are connected and the distances between them. The most common network devices include hubs, switches, routers, and gateways. Most large networks contain several levels of interconnection, the most important of which include edge connections, backbone connections, and wide-area connections.

Upgrade - To replace existing software or firmware with a newer version.

Upload - To transmit a file over a network. In a communications session, upload means transmit, download means receive.

UTP - Unshielded twisted pair is the most common kind of copper telephone wiring. Twisted pair is the ordinary copper wire that connects home and many business computers to the telephone company. To reduce crosstalk or electromagnetic induction between pairs of wires, two insulated copper wires are twisted around each other. Each signal on twisted pair requires both wires. Since some telephone sets or desktop locations require multiple connections, twisted pair is sometimes installed in two or more pairs, all within a single cable.

WEP (Wired Equivalent Privacy) - A data privacy mechanism based on a 64-bit, 128-bit, or 256-bit shared key algorithm, as described in the IEEE 802.11 standard.

Appendix D: Specifications

Standards	802.11b, 802.3, 802.3u
Port	One 10/100 RJ-45 Port
Button	1 x Reset Button
Cabling Type	RJ-45
LEDs	1 x Power, 1 x Activity, 1 x Link
Transmit Power	15 dBm @ Normal Temp Range
Security Features	MAC filtering, WEP, SSID Broadcast enable/disable
WEP Key Bits	64/128-bit

Environmental

Dimensions	7.32" x 1.89" x 6.89" (186 mm x 48 mm x 175 mm)
Weight	11.00 oz. (0.31 kg)
Power	External, DC 12V
Certifications	FCC
Operating Temp.	0°C to 40°C
Storage Temp.	-20°C to 70°C
Operating Humidity	10% to 85%, Non-Condensing
Storage Humidity	5% to 90%, Non-Condensing

Appendix E: Warranty Information

BE SURE TO HAVE YOUR PROOF OF PURCHASE AND A BARCODE FROM THE PRODUCT'S PACKAGING ON HAND WHEN CALLING. RETURN REQUESTS CANNOT BE PROCESSED WITHOUT PROOF OF PURCHASE.

IN NO EVENT SHALL LINKSYS'S LIABILITY EXCEED THE PRICE PAID FOR THE PRODUCT FROM DIRECT, INDIRECT, SPECIAL, INCIDENTAL, OR CONSEQUENTIAL DAMAGES RESULTING FROM THE USE OF THE PRODUCT, ITS ACCOMPANYING SOFTWARE, OR ITS DOCUMENTATION. LINKSYS DOES NOT OFFER REFUNDS FOR ANY PRODUCT.

LINKSYS OFFERS CROSS SHIPMENTS, A FASTER PROCESS FOR PROCESSING AND RECEIVING YOUR REPLACEMENT. LINKSYS PAYS FOR UPS GROUND ONLY. ALL CUSTOMERS LOCATED OUTSIDE OF THE UNITED STATES OF AMERICA AND CANADA SHALL BE HELD RESPONSIBLE FOR SHIPPING AND HANDLING CHARGES. PLEASE CALL LINKSYS FOR MORE DETAILS.

Appendix F: Contact Information

For help with the installation or operation of this product, contact Linksys Technical Support at one of the phone numbers or Internet addresses below.

Sales Information	800-546-5797 (LINKSYS)
Technical Support	800-326-7114
RMA (Return Merchandise Authorization) Issues	www.linksys.com (or call 949-271-5461)
Fax	949-265-6655
E-mail	support@linksys.com
Web	http://www.linksys.com
FTP Site	ftp.linksys.com



<http://www.linksys.com>

© Copyright 2003 Cisco Systems Inc. All rights reserved.