



Connectware™

Digi One IA Modem™ Quick Start Guide



PN:(1P)90000269 A

1 What's in the Box

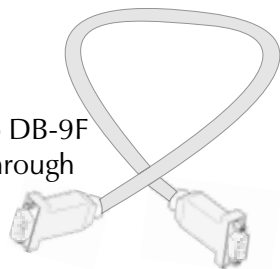


Digi One IA Modem

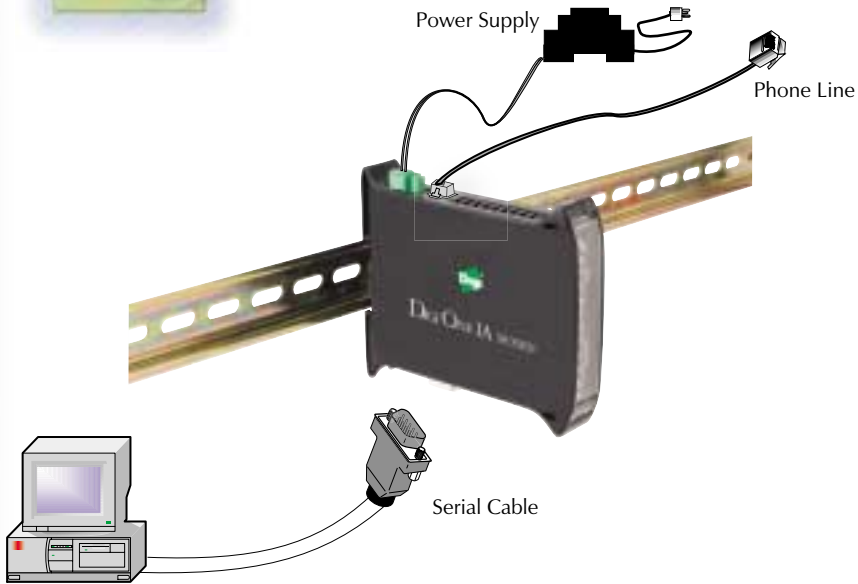


Resource CD

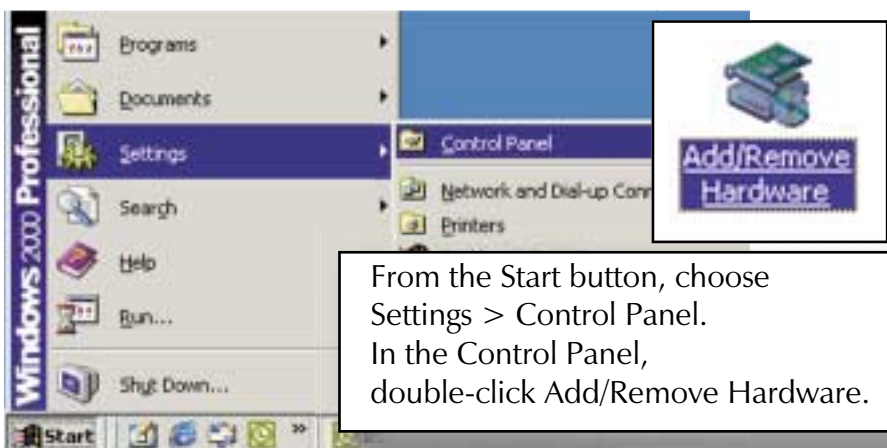
DB-9M to DB-9F Straight-through Cable



2 Hardware Setup



3 Install Hardware



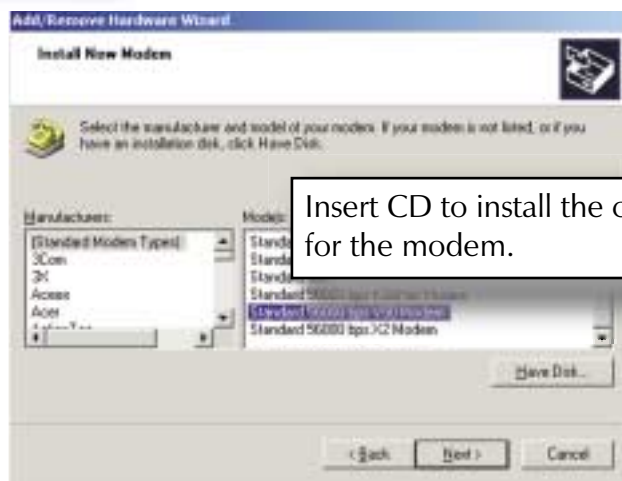
From the Start button, choose Settings > Control Panel. In the Control Panel, double-click Add/Remove Hardware.

4 Follow Wizard



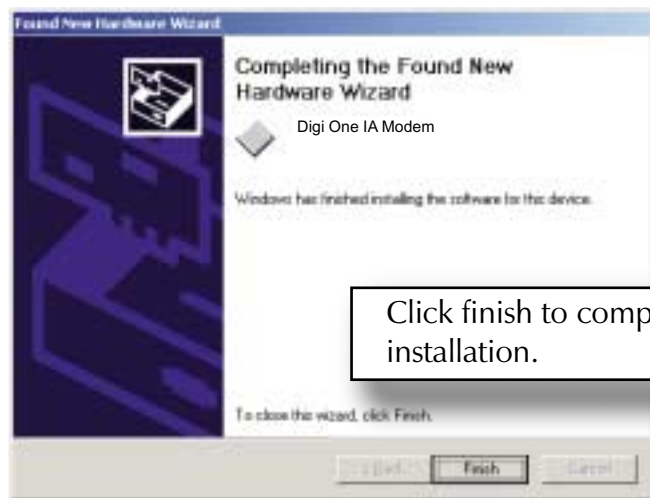
Use Microsoft Windows Wizard to install new modem. Let the Wizard discover the modem hardware.

5 Insert Disk



Insert CD to install the config file (.inf) for the modem.

6 Complete Installation



Click finish to complete installation.

Congratulations, your Digi One IA Modem is installed.

For FAQs and brief AT reference guide, see other side. For complete AT Command guide, use the CD.

For Digi Technical Support
You must register your product to validate your warranty and receive your free 90 days of technical support! Please register online at <http://register.digi.com>
If you encounter problems installing this product, your first line of support is to contact your solution provider for technical assistance. See other side for top 4 FAQs.

For self help, visit the Digi support site at <http://support.digi.com> for drivers, firmware upgrades, cable information, documentation, additional FAQs, and knowledge base articles.