



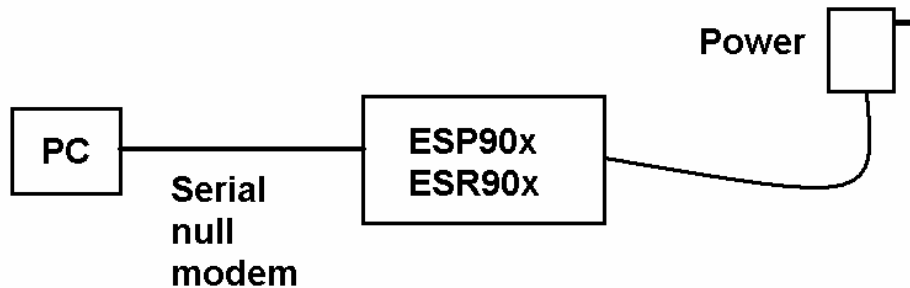
ESP90x/ESR90x
Field Upgrade Process

V1.00

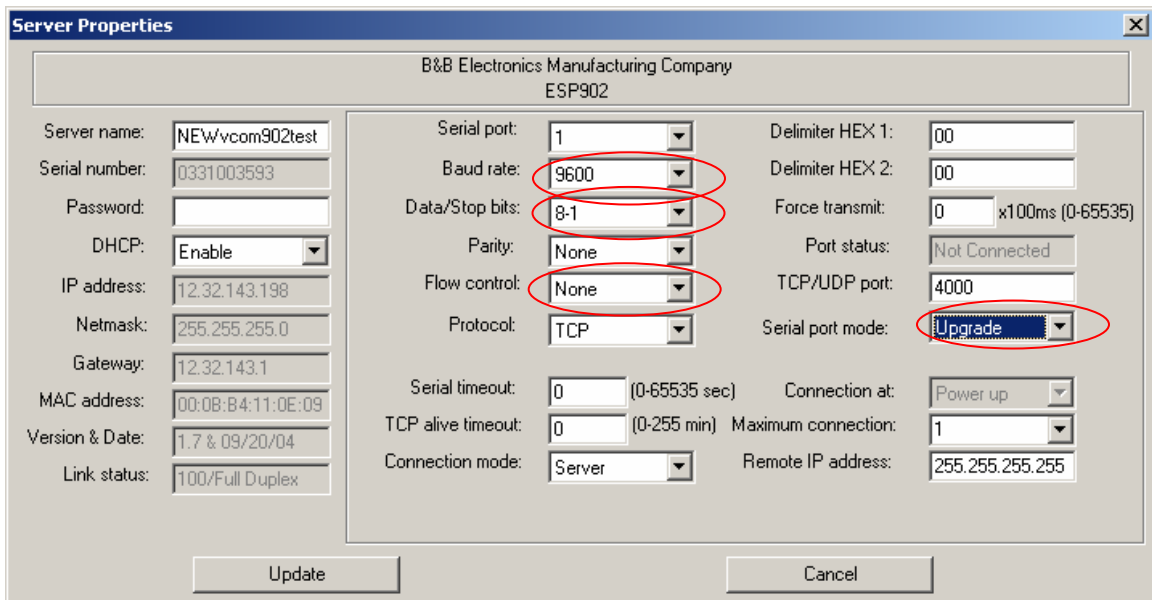
Field Upgrade for ESP90x/ESR90x

Steps

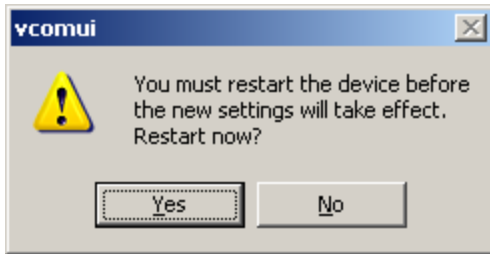
1. Download software, firmware and field upgrade process document from B&B website.
2. Run software *.exe file to remove the **old** Vlinx software.
3. Run software *.exe file to install the **new** Vlinx software.
4. Now you are ready to install the **new** firmware using Vlinx software and the rest of the steps in this document.



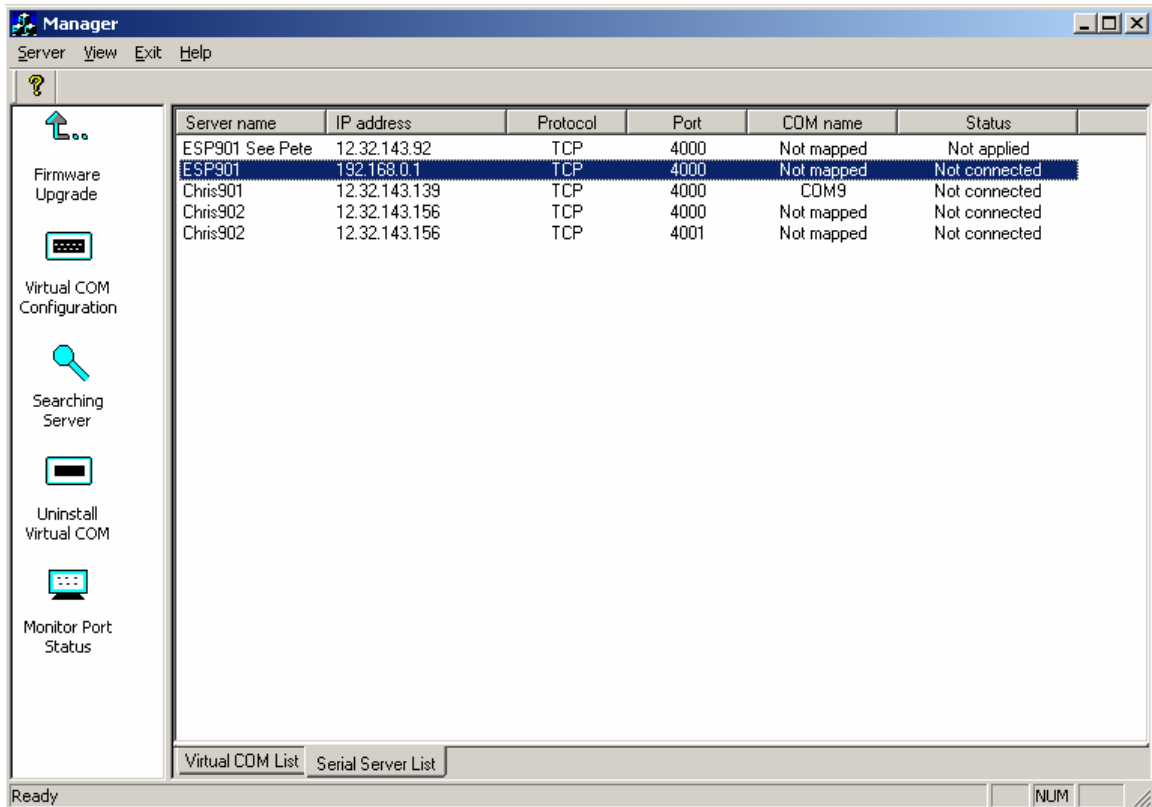
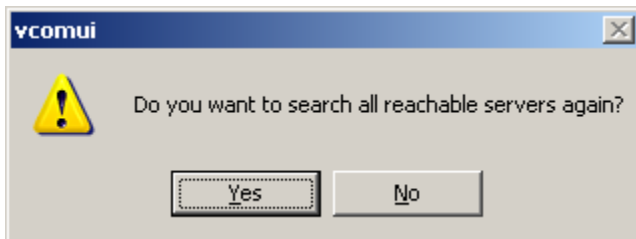
5. Setup the hardware as pictured above.
6. Save the firmware files to a known location.
7. Run VLINX Manager software.
8. Put unit in upgrade mode and set baud rate to 115200, 8-N-1, no flow control.



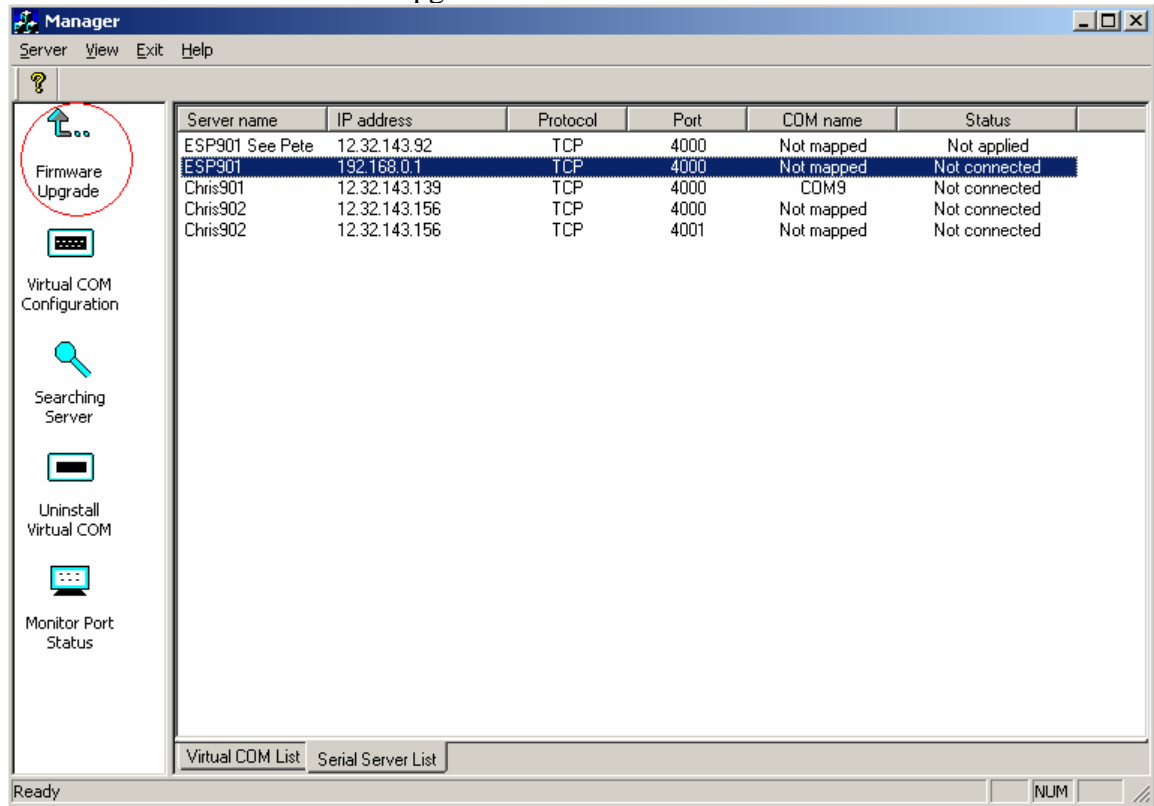
9. Click Update and this box will appear.



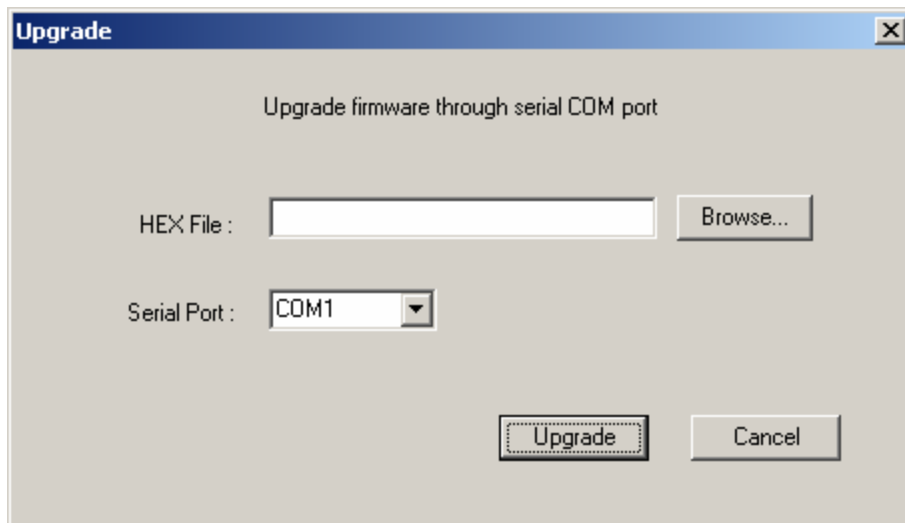
10. Click yes and make sure your ESP90x/ESR90x is on the list. If not click on “Searching Server”. If you still do not see, reboot ESP90x/ESR90x device by pushing reset button or by cycling power.



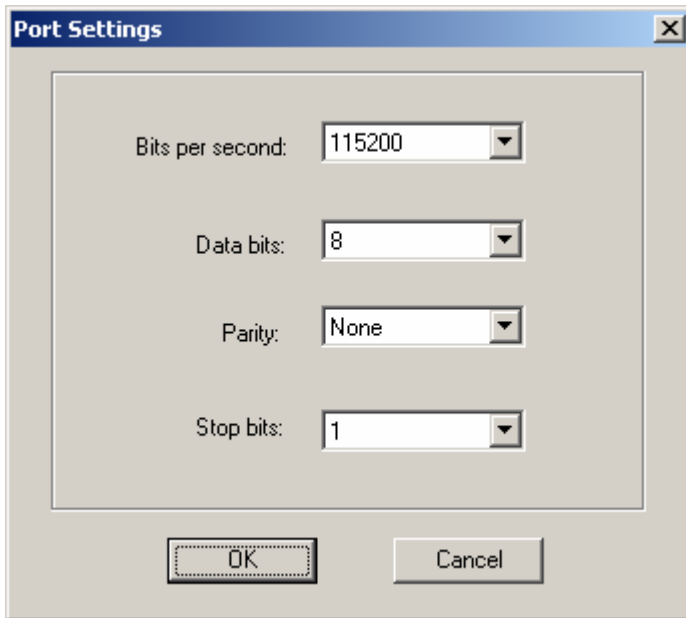
11. Next click on “Firmware Upgrade”.



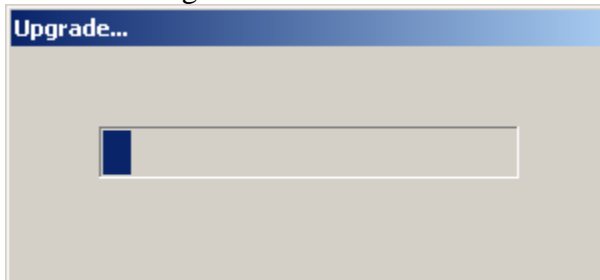
12. Browse for the location of the HEX files and select the COM port you are connected to via serial null modem cable. Serial upgrade is prefer. However, an alternative method can be done with VCOM that is associated with port 1 of the unit via network cable.



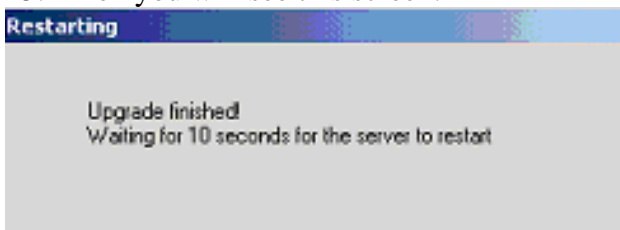
13. Select baudrate of 115200 and 8-N-1 as shown below and hit <ok>.



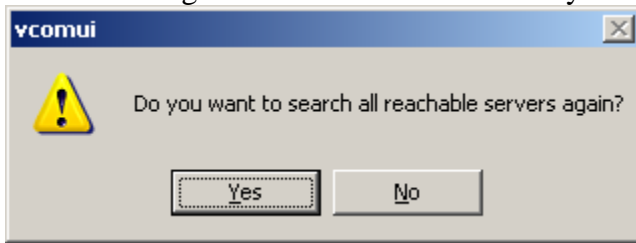
14. You will get this screen next. Wait for it to complete.



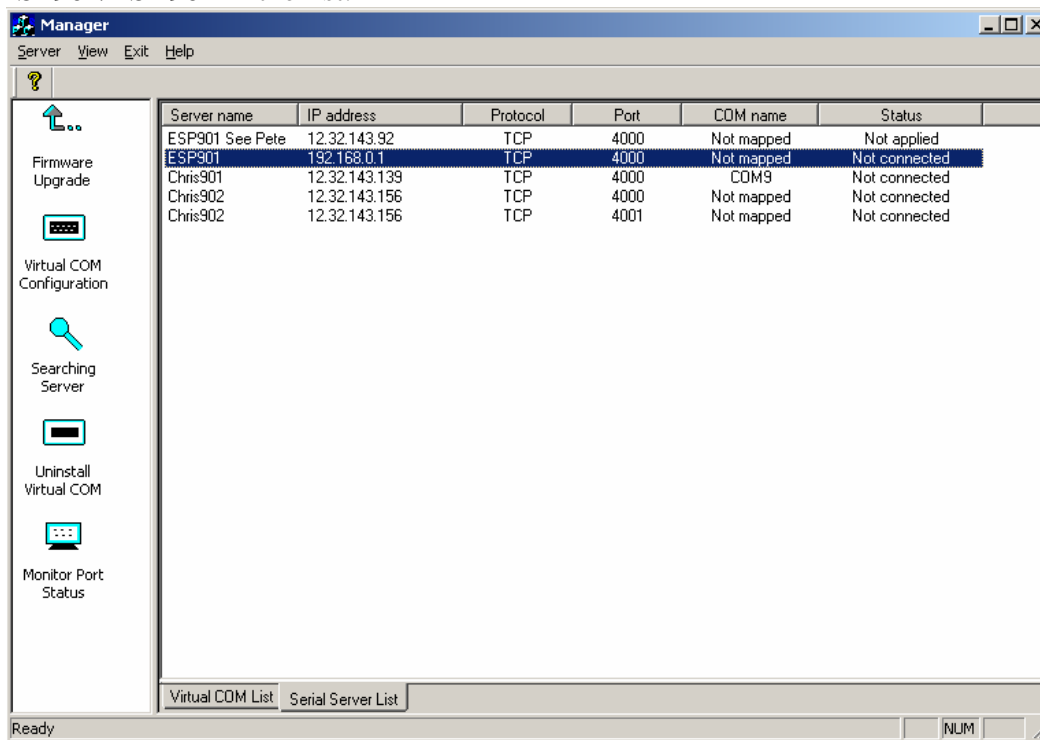
15. Then you will see this screen.



16. You will get this screen next. Hit the <yes> button.



17. Check the ready LED. It should be blinking. IF not, reset manually by hitting reset button or repowering the unit. Click on "searching server" and click on your ESP90x/ESR90x in the list.



18. Verify that the firmware was successful by checking out Version & Date.
 - a. It should say "x.xx & xx/xx/xx"(current firmware & date). Upgrade successful.
 - b. If not, repeat procedure. If you need further assistance, please contact B&B Electronics technical support team.

Server Properties

B&B Electronics Manufacturing Company
ESP902

Server name:	NEWvcom902test	Serial port:	1	Delimiter HEX 1:	00
Serial number:	0331003593	Baud rate:	9600	Delimiter HEX 2:	00
Password:		Data/Stop bits:	8-1	Force transmit:	0 x100ms (0-65535)
DHCP:	Enable	Parity:	None	Port status:	Not Connected
IP address:	12.32.143.198	Flow control:	None	TCP/UDP port:	4000
Netmask:	255.255.255.0	Protocol:	TCP	Serial port mode:	RS232
Gateway:	12.32.143.1	Serial timeout:	0 (0-65535 sec)	Connection at:	Power up
MAC address:	00:08:B4:11:0E:09	TCP alive timeout:	0 (0-255 min)	Maximum connection:	1
Version & Date:	1.7 & 09/20/04	Connection mode:	Server	Remote IP address:	255.255.255.255
Link status:	100/Full Duplex				

Update Cancel