

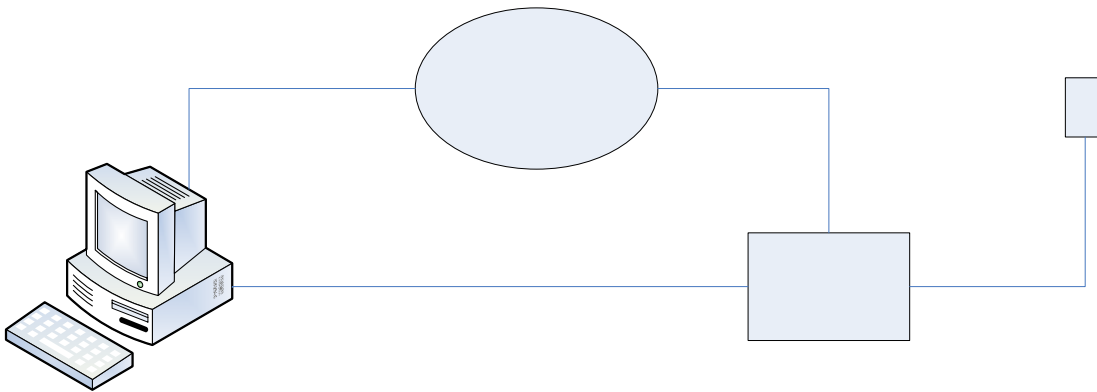


ESP211/211-232/211-485  
ESP411/412/414  
Firmware Upgrade Procedure  
V1.00

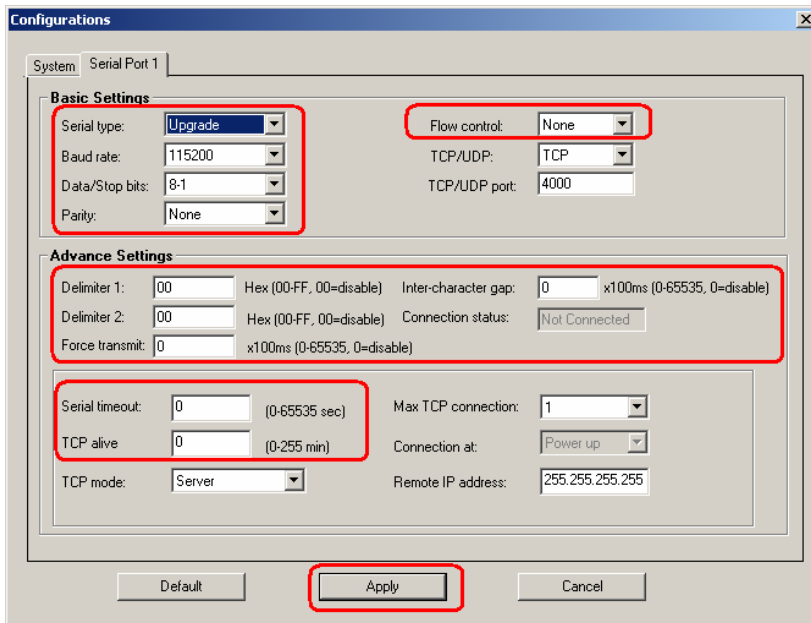
## Firmware Upgrade for ESP211-xxx/41x

### Steps

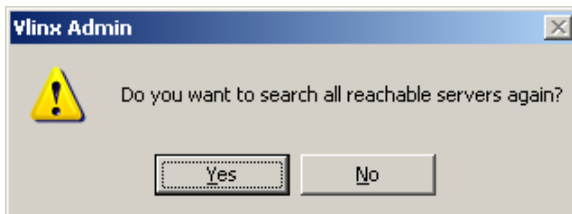
1. Download the following from B&B website.
  - a. Vlinx Manager software
  - b. ESP211-xx/41x firmware
  - c. This firmware upgrade procedure document.
2. Install the Vlinx Manager software (if necessary)
  - a. Run software \*.exe file to remove the **old** Vlinx Manager software.
  - b. Run software \*.exe file again to install the **new** Vlinx Manager software.
3. Now you are ready to install the **new** firmware using the Vlinx Manager software. Please follow the rest of the steps in this document.



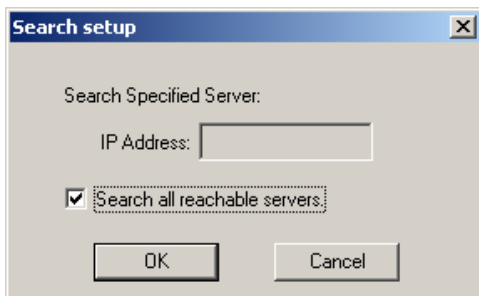
5. Setup the hardware as pictured above. *An alternative method via VCOM associated to port 1 can be use (normally used for remote upgrades).*
6. Save the firmware file to a known location as a \*.hex file format.
7. Run Vlinx Manager software.
8. Configure the unit to the following:
  - a. Set **Serial type** to <Upgrade>
  - b. Set **Baud rate** to <115200>
  - c. Set **Data/Stop bits** to <8-1>
  - d. Set **Parity** to <None>
  - e. Set **Flow control** to <None>
  - f. Set **Delimiter 1 & Delimiter 2** to <00>
  - g. Set **Force transmit** to <0>
  - h. Set **Inter-character gap** to <0>
  - i. Set **Serial timeout** to <0>
  - j. Set **TCP alive** to <0>

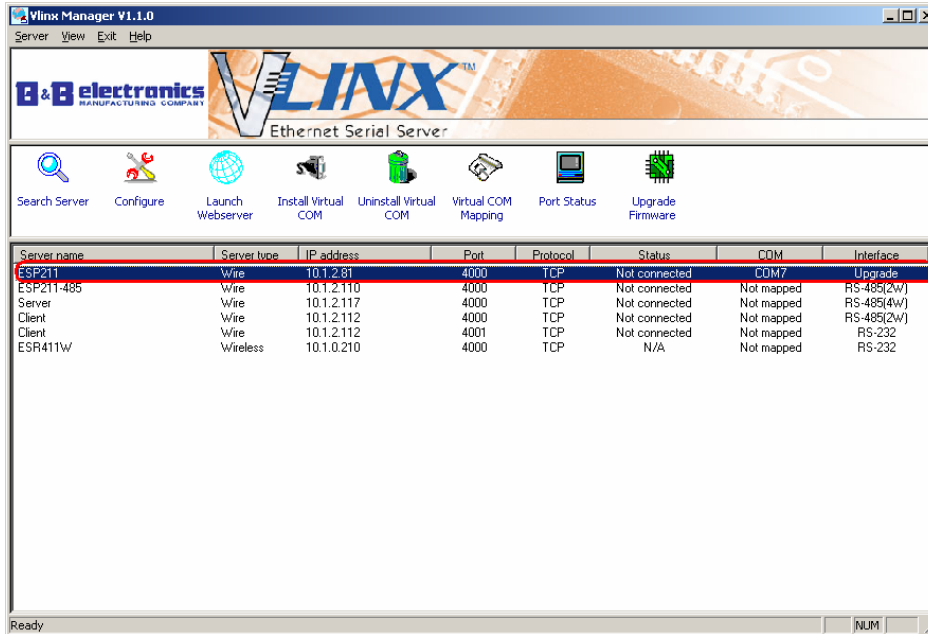


9. Click <Update> and this box will appear.

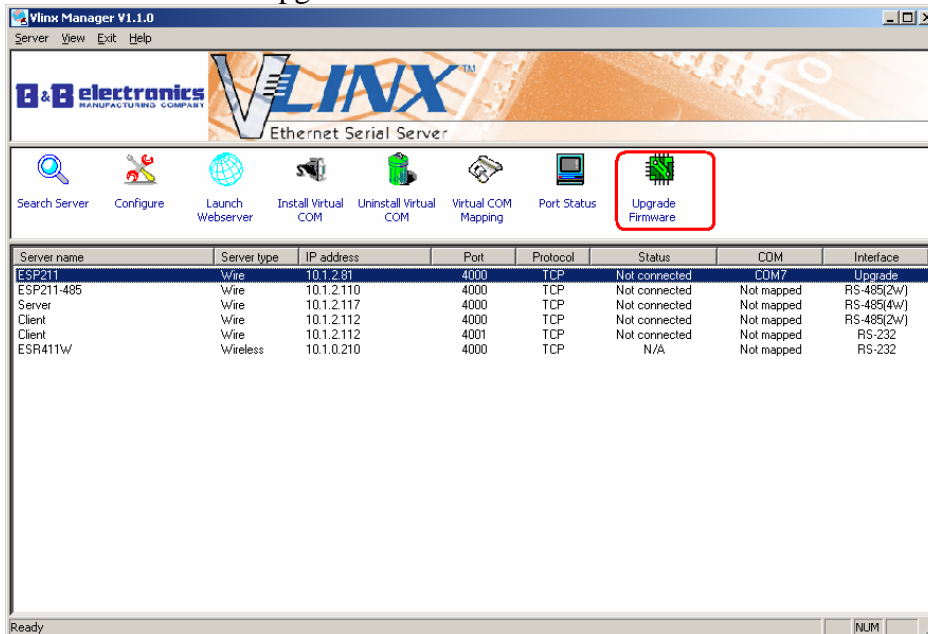


10. Click <Yes> to restart the unit. Click <Yes> to search for servers. Make sure your ESP211-xx/41x is on the list. If not click on “Search Server”. If you still do not see your device, reboot ESP211-xxx/41x device by pushing reset button or by cycling power.

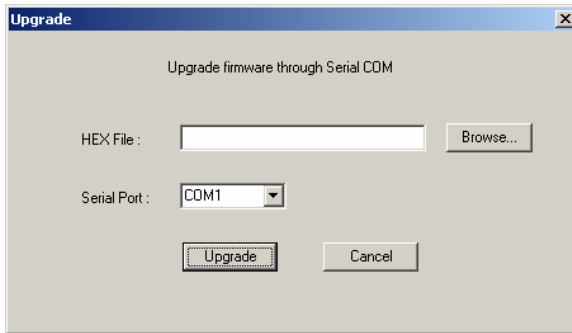




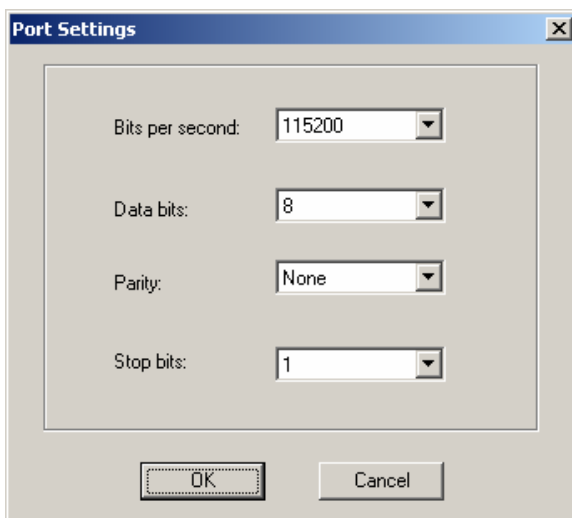
11. Next click on “Upgrade Firmware”.



12. Browse for the location of the HEX files and select the COM port you are connected to via serial null modem cable. Serial upgrade is preferred. However, an alternative method can be done with VCOM that is associated with port 1 of the unit via network cable. *This VCOM method is very useful for remote location upgrading.*



13. Select **Bits per second** to <115200>, **Data bits** to <8>, **Parity** to <None>, **Stop bits** to <1>, and click <OK>

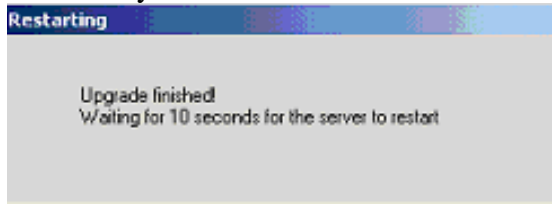


14. You will get this screen next. Wait for it to complete.

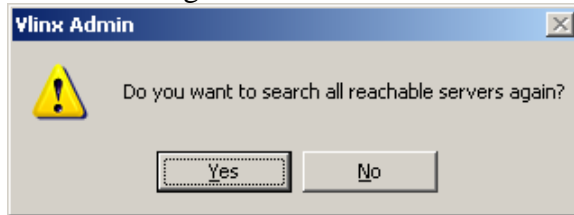
**Warning – Do NOT remove power at this step or disrupt the process in anyway, or the flash memory may crash.**



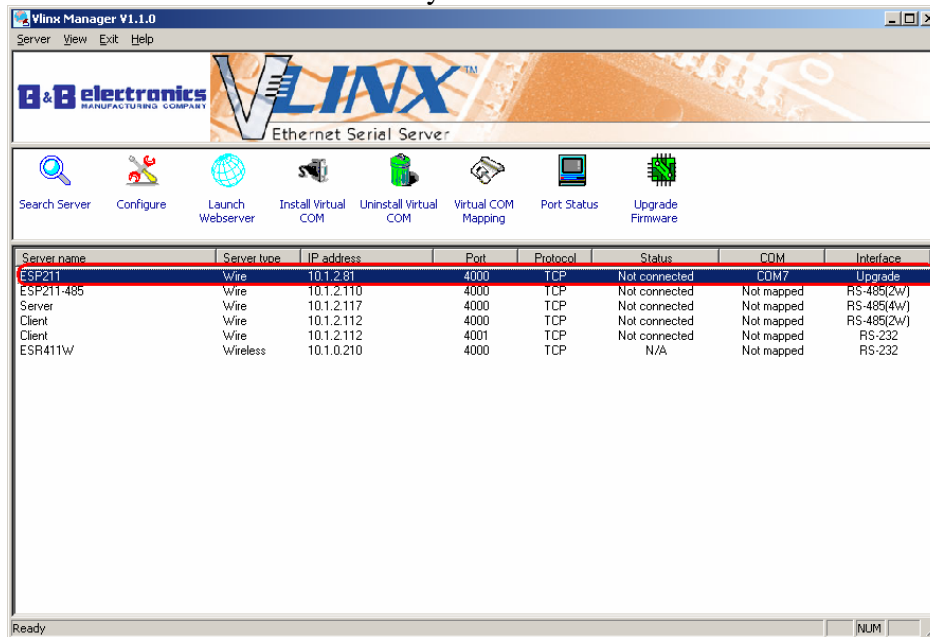
15. Then you will see this screen.



16. You will get this screen next. Click the <Yes> button.



17. Check the Ready LED. It should be blinking once per second. If not, reset the unit by push & release the <Reset> button (<5 sec) or power cycling the unit. Click on "Search Server" and click on your ESP211-xxx/41x on the list.



18. Verify that the firmware upgrade was successful by checking out "FW Version".
- If it says the version you installed, then upgrade is successful. Change the settings back to your normal configuration.
  - If it says other version than what you installed, repeat procedure. Or try defaulting the unit and try again.
  - If you need further assistance, please contact B&B Electronics technical support team.

The screenshot shows a configuration window titled "Configurations" with a sub-tab "Serial Port 1". The window displays the "B&B Electronics Vlinx Manager V1.1.0" interface. It contains two columns of configuration fields:

Field Name	Value
Model name:	ESP211
Server name:	ESP211
Serial number:	02020910000010
Password:	
<b>FW version:</b>	<b>1.1.0</b>
MAC address:	00:22:E4:EE:EF:89
DHCP:	Enable
IP address:	10.1.2.81
Netmask:	255.255.0.0
Gateway:	10.1.0.1
Link status:	100Mbps
Hardware ID:	AP-IPS311-A01

At the bottom of the window are three buttons: "Default", "Apply", and "Cancel".