

ES1AWB ESR901WB

Software Errata Sheet

ES1AWB/ESR901WB Errata Summary

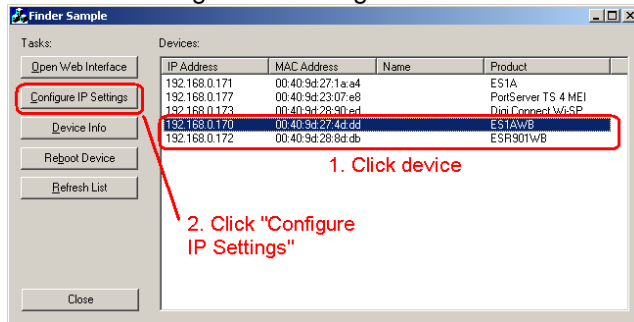
Setting Static IP Address Work Around

This product is factory defaulted to DHCP mode. It is intended that your network's DHCP Server provide the IP address assignment. If there is not a DHCP server on your network or if the DHCP request fails and you would like to set your own static IP address, there are 2 methods to work around.

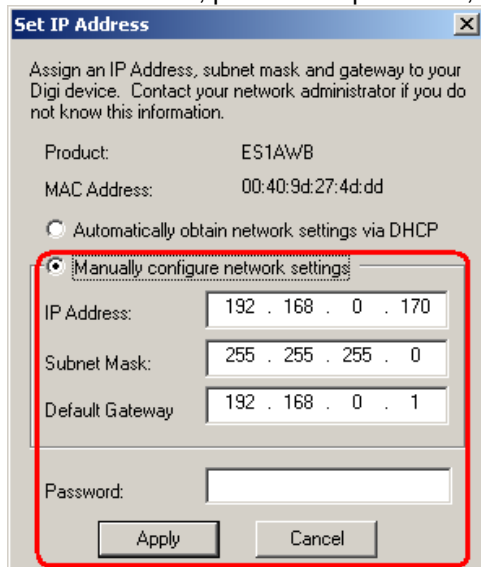
Method #1 – Use Device Discovery

Use the Finder.exe software to configure static IP

1. Open Finder.exe software (available at http://www.bb-elec.com/PESxA_Software.asp)
2. Click on the device ES1AWB or ESR901WB.
3. Click "Configure IP Settings"



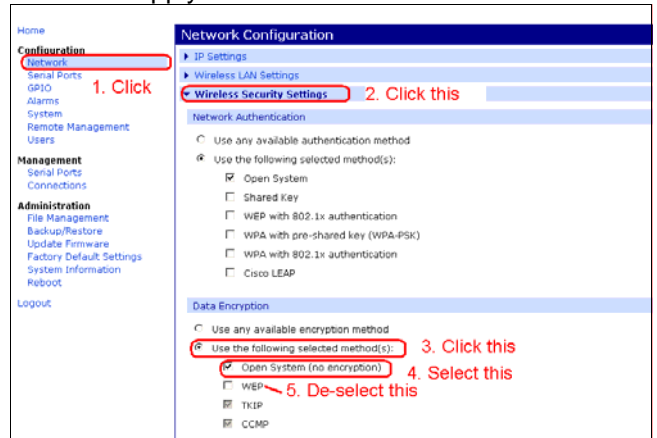
4. Click "Manually...." and configure all the IP address, provide the password, & click <Apply>



Method #2 – Use Web Server

Use the Web browser to configure the static IP

1. Open a web browser and type the IP address of the device. Note the default:
 user = root
 password = dbps
2. Go to the "Network" page to change the "Data Encryption". Follow the instruction as follows and click <Apply>.



3. Now go to "Network" page to change the "IP Settings". Follow the instruction as follows:

