

Quick Start Guide

Elinx Gigabit Ethernet Switch EIR41x-2SFP Series



1

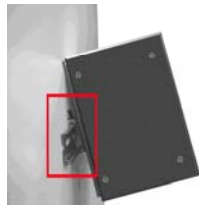
Items Included

- Ethernet Switch
- CD with Support Manual
- This Quick Start Guide
- Panel Mount Bracket

2

Hardware Installation

1. Select a mounting location and install the switch onto a piece of DIN rail or use the included panel mount brackets for wall or panel mounting
2. Connect power to the switch
 - 12 to 48 VDC



3

LED Chart

LED	Status	Description
PWR1	Green	Power 1 is active
	Off	No power at input 1
PWR2	Green	Power 2 is active
	Off	No power at input 2
Fault	Red	PWR1 or PWR2 has failed
	Off	PWR1 & PWR2 are both active or no power is applied
10/100 Copper Upper LED	Green	Connected to network
	Blinking	Networking is active
	Off	Not connected to network
10/100 Copper Lower LED	Yellow	Full duplex operation
	Blinking	Collision of packets occurs
	Off	Half duplex or no connection
Gigabit Copper Upper LED	Green	Connected to network
	Blinking	Networking is active
	Off	Not connected to network
Gigabit Copper Lower LED	Green	Operating at 1000M
	Off	Operating at 10/100M or disconnected
SFP Link/Active (100/1000)	Green	SFP port is connected to network
	Blinking	Networking is active
	Off	Not connected to network

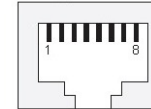
- If redundancy is desired be sure to connect two separate power supplies by using the two DC inputs on the terminal blocks
- If only one power input is used the Fault LED will light (this is normal)

4

Ports

RJ-45 ports: The RJ-45 ports auto-sense for 10, 100 or 1000 Mbps devices connections. The auto MDI/MDIX feature allows connections to switches, workstation and other equipment without changing straight through or crossover cabling. The charts below show the cable pin assignments for straight through and crossover cables.

8-pin RJ45



1. Auto MDI/MDI-x is supported. A straight through or cross-over cable may be used.

2. 10/100/1000 auto negotiation and full/half-duplex are supported.

MDI Cable Pinout	
Pin	Signal
1	Tx+
2	Tx-
3	Rx+
6	Rx-

MDI-X Cable Pinout	
Pin	Signal
1	Rx+
2	Rx-
3	Tx+
6	Tx-

5

Installation Complete

1. When the network cables are attached and power is applied, installation is complete.
2. The switch will automatically discover network devices, populate its MAC address table, and pass traffic to the appropriate ports.



International Headquarters: 707 Dayton Road PO Box 1040 Ottawa, IL 61350 USA
815-433-5100 Fax 433-5104 www.bb-elec.com orders@bb-elec.com support@bb-elec.com

European Headquarters: Westlink Commercial Park Oranmore Co. Galway Ireland
+353 91 792444 Fax +353 91 792445 www.bb-europe.com orders@bb-europe.com support@bb-europe.com