

# ADAM-5050

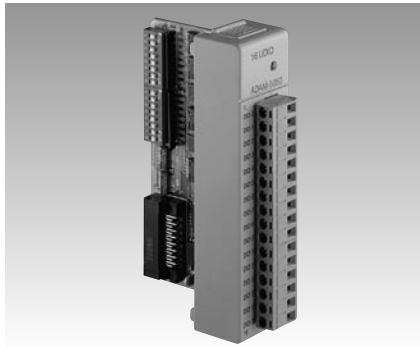
# ADAM-5051/5051D

# ADAM-5051S

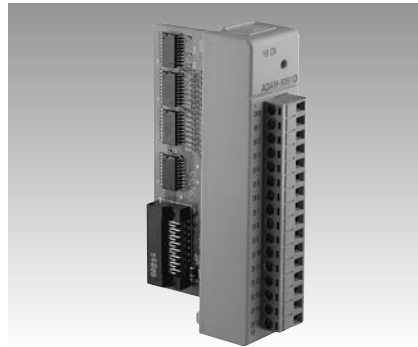
16-channel Universal Digital I/O Module

16-channel Digital Input Module

16-channel Isolated Digital Input Module with LED



ADAM-5050



ADAM-5051  
ADAM-5051D



ADAM-5051S



## Specifications

### General

- **Certifications** CE, FM
- **Connectors** 1 x Plug-in screw terminal (# 14~22 AWG)
- **Power Consumption** 0.35 W (typical); 1.2 W (max.)

### Digital I/O

- **Channels** 16
- **Channel I/O Type** Bit-wise selectable by DIP switch

### Digital Input

Dry Contact: Logic level 0: close to GND

Logic level 1: open  
Logic level 0: 2 V max.  
Logic level 1: 4 ~ 30 V

Wet Contact:

### Digital Output

Open collector to 30 V, 100 mA and 450 mW max. load

## Ordering Information

- **ADAM-5050** 16-channel Universal Digital Input/Output Module

## Specifications

### General

- **Certifications** CE, FM (ADAM-5051 only)
- **Connectors** 1 x Plug-in screw terminal (# 14~22 AWG)
- **LED Indicators: (ADAM-5051D)**
  - On: Input logic level 1  
Input floating
  - Off: Input logic level 0
- **Power Consumption** ADAM-5051: 0.4 W (typical); 0.53 W (max.)  
ADAM-5051D: 0.5 W (typical); 0.84 W (max.)

### Digital Input

- **Circuit Type** Pull-up current: 0.5 mA (Source Type)
- **Channels** 16
- **Input Voltage** 30 V<sub>max</sub>
- **Logic Level** Logic level 0: 1 V max.  
Logic level 1: 3.5 ~ 30 V

## Ordering Information

- **ADAM-5051** 16-channel Digital Input Module
- **ADAM-5051D** 16-channel Digital Input Module with LED

## Specifications

### General

- **Certifications** CE
- **Connectors** 1 x Plug-in screw terminal (# 14~28 AWG)
- **LED Indicators** On: Active  
Off: Inactive
- **Power Consumption** 0.8 W (typical)

### Digital Input

- **Channels** 16
- **Input Voltage** 50 V<sub>max</sub>
- **Logic Level** Logic level 0: 3 V max.  
Logic level 1: 10 ~ 50 V

### Protection

- **Optical Isolation** 2500 V<sub>DC</sub>
- **Overvoltage Protection** 70 V<sub>DC</sub>

## Ordering Information

- **ADAM-5051S** 16-channel Isolated Digital Input Module with LED