

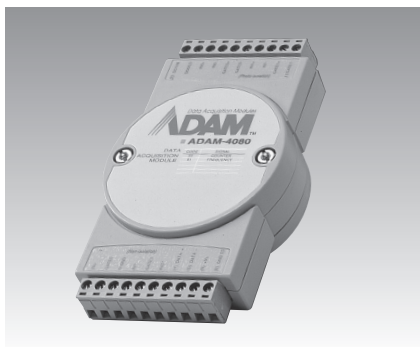
ADAM-4069 ADAM-4080 ADAM-4080D ADAM-4914V

8-channel Power Relay Output Module with Modbus® Counter/Frequency Module Counter/Frequency Module with LED Display 4-channel Voltage Input Surge Protection Module



NEW

ADAM-4069



ADAM-4080/4080D



ADAM-4914V

Specifications

Relay Output

- **Channels** 4 form A, 4 form C
 - **Contact Rating** AC: 250 V @ 5 A
DC: 30 V @ 5 A
 - **Breakdown Voltage** 1000 V_{AC} (50/60 Hz)
 - **Relay on Time (typical)** 5 ms
 - **Relay off Time (typical)** 5.6 ms
 - **Insulation Resistance** 1,000 MΩ minimum at 500 V_{DC}
 - **Built-in Watchdog Timer** System and Comm. Watchdog
- Power**
- **Power Requirements** Unregulated +10 ~ +30 V_{DC}
 - **Power Consumption** 0.6 W @ 24 V_{DC}

Ordering Information

- **ADAM-4069** 8-channel Power Relay Output Module with Modbus®

Specifications

Counter Input

- **Channels** Two independent 32-bit counters
 - **Input Frequency** 50 kHz max.
 - **Input Mode** Isolated or non-isolated
 - **Isolation Input Level** Logic level 0: +1 V max.
Logic level 1: +3.5 V ~ +30 V
 - **Isolation Voltage** 2500 V_{RMS}
 - **Non-isolated** Programmable threshold:
- Input Level**
- Logic level 0: 0 to +5 V (default = 0.8 V)
 - Logic level 1: 0 to +5 V (default = 2.4 V)
- **Input Pulse Width** >10 ms.
 - **Maximum Count** 4,294,967,295 (32 bits)
 - **Programmable Digital Noise Filter** 2 ~ 65 ms
 - **Alarm** Alarm comparator on each counter
 - **Preset Type** Absolute or relative

Frequency Measurement

- **Range** 5 Hz ~ 50 kHz
- **Programmable Built-in Gate Time** 1.0/0.1 sec.

Display (ADAM-4080D Only)

- **LED Indicator** 5-digit readout, CH 0 or CH 1 (programmable)

Digital Output

- **Channels** 2
Open collector to 30 V, 30 mA max. load power dissipation: 300 mW for each channel

Built-in Watchdog Timer

Power

- **Power Requirements** Unregulated 10~30 V_{DC}
- **Power Consumption** 2.0 W @ 24 V_{DC}

Specifications

Input

- **Channels** 4 differential voltage input and thermocouple

Performance

- **Discharge Voltage** BETWEEN LINES: 18 V min
LINE TO GND: 350 V max.
- **Max. Surge Voltage** BETWEEN LINES: 23 V min
LINE TO GND: +4,000 V max.
- **Leakage Current** BETWEEN LINES: ≤ 10µA @ 7.5 V_{DC}
LINE TO GND: ≤ 5µA @ +140 V_{DC}
- **Response Time** ≤ 0.1 µsec.
- **Discharge Current** 5,000 A (8/20 µsec.)
- **Internal Series Resistance** Approx. 20Ω including return
- **Maximum Line Voltage** 10 V

Ordering Information

- **ADAM-4914V** 4-channel Voltage Input Surge Protection Module
- **ADAM-4080** Counter/Frequency Module
- **ADAM-4080D** Counter/Frequency Module with LED Display

Secure online ordering
24/7/365 from

B & B electronics
MANUFACTURING COMPANY

International Headquarters: 707 Dayton Road - PO Box 1040 - Ottawa, IL 61350 USA
815-433-5100 Fax 815-433-5104 www.bb-elec.com orders@bb-elec.com support@bb-elec.com

European Headquarters: Westlink Commercial Park - Oranmore Co. Galway - Ireland
+353 91 792444 Fax +353 91 792445 www.bb-europe.com orders@bb-europe.com support@bb-europe.com